



APPURTENANT RIPARIAN LANDS  
T42N R11W

80' Wide Road Easement 251983-482  
South 30' Part Of Plat 257  
North 30' Subject To Public Access  
Easement 128053

AFFORDABLE HOUSING LOT	1 Lot (Lot 40**)	2.71
TOWNHOUSE - CABIN LOTS	3 Lots (Lots 42-44***)	14.04
EXACTION LOTS	2 Lots (Lots 38 & 45)	3.90
UTILITY LOT	1 Lot (Lot 46)	0.88
GOLF COURSE LOT (ENCOMPASSING CLUBHOUSE SITE, TENNIS COURT SITES, EMPLOYEE HOUSING, MAINTENANCE & ADMINISTRATION BUILDING SITES, GOLF COURSE PLAY AREAS, SPRING GULCH COUNTY ROAD EASEMENT AND UNDEVELOPED AREAS)	1 Lot (Lot 47)	278.09
	48 Lots Total	351.80 TOTAL AREA

\* Lot 38 Reserved for future subdivision to a maximum of 4 single family residential lots  
\*\* Lot 40 Reserved for future subdivision to a maximum of 22 affordable housing units  
\*\*\* Lots 42-44 Reserved for subdivision to a maximum of 37 townhouse - cabin units

LAND USE DISTRICT AND ENVIRONMENTAL PROTECTION DISTRICTS:

JACKSON HOLE GOLF AND TENNIS CLUB  
PLANNED UNIT DEVELOPMENT (PUD) DISTRICT FOR PLANNED RESORT  
(EXCEPT FOR ROAD LOT 48)

NATURAL RESOURCE OVERLAY DISTRICT  
Lot 45 And Parts of Lot 47 South of Spring Gulch County Road;  
Boundary Depicted On This Sheet

MINIMUM SETBACK REQUIREMENTS:

SINGLE FAMILY RESIDENTIAL LOTS 1-37: THE MINIMUM SETBACK REQUIREMENTS FOR EACH LOT ARE ESTABLISHED BY THE BUILDING ENVELOPES SHOWN ON SHEET 8 OF THIS PLAT

AFFORDABLE HOUSING LOT: PRIMARY STRUCTURES:  
EAST BOUNDARY 20'  
ALL OTHER BOUNDARIES 25'  
IRRIGATION DITCH BANK TO ALL STRUCTURES 15'

SETBACKS FOR OTHER LOTS OF THE FOREGOING SUBDIVISION SHALL BE DETERMINED WITH THE APPROVAL OF THE DEVELOPMENT PLAN AND/OR PLATS FOR EACH LOT.

GENERAL NOTES:

THE PROPOSED DEVELOPMENT IS LOCATED IN THE IMMEDIATE PROXIMITY OF AN EXISTING AIRPORT.

EXCEPT FOR SPRING GULCH COUNTY ROAD NO. 22-4, NO PUBLIC MAINTENANCE OF STREETS OR ROADS.

COMMUNITY WATER SUPPLY:

THE PROPOSED DEVELOPMENT WILL BE CONNECTED TO THE TOWN OF JACKSON WASTEWATER TREATMENT FACILITY; HOWEVER, THE OWNERSHIP OF AND MAINTENANCE RESPONSIBILITY FOR THE WASTEWATER COLLECTION SYSTEM FOR THE FOREGOING SUBDIVISION WILL REST WITH JACKSON HOLE GOLF AND TENNIS CLUB, INC. (OR ITS SUCCESSORS) DIRECTLY OR THROUGH ANY RELATED SUBSIDIARY ENTITY SUCH AS GROS VENTRE UTILITY COMPANY, OR AN IMPROVEMENT AND SERVICE DISTRICT, OR HOMEOWNERS' ASSOCIATION. THE TOWN OF JACKSON WILL HAVE NO RESPONSIBILITY FOR SAID WASTEWATER COLLECTION SYSTEM.

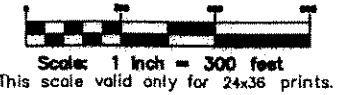
THE CURRENT BUILDING CODE RESOLUTION REQUIRES THAT STRUCTURES 5000 SQUARE FEET OR LARGER, NOT SEPARATED BY APPROVED FIRE WALLS, BE PROTECTED BY AN APPROVED INTERIOR SPRINKLER SYSTEM.

UNDER CURRENT TETON COUNTY REGULATIONS, AND THE APPROVED FINAL DEVELOPMENT PLAN FOR THE FOREGOING SUBDIVISION, EXCEPT FOR LOTS 38, 40 AND 42-44, NO FURTHER SUBDIVISION OF LOTS OF THE FOREGOING SUBDIVISION IS ALLOWED.

FOR FULL DETAILS OF LOTS AND EASEMENTS SHOWN HEREON SEE SHEETS 3-9 OF THIS PLAT; SEE DECLARATION OF COVENANTS, CONDITIONS AND RESTRICTIONS RECORDED CONCURRENTLY WITH THIS PLAT FOR DETAILS OF RESERVATION OF EASEMENTS ALONG THE PERIMETERS OF LOTS 1-38.

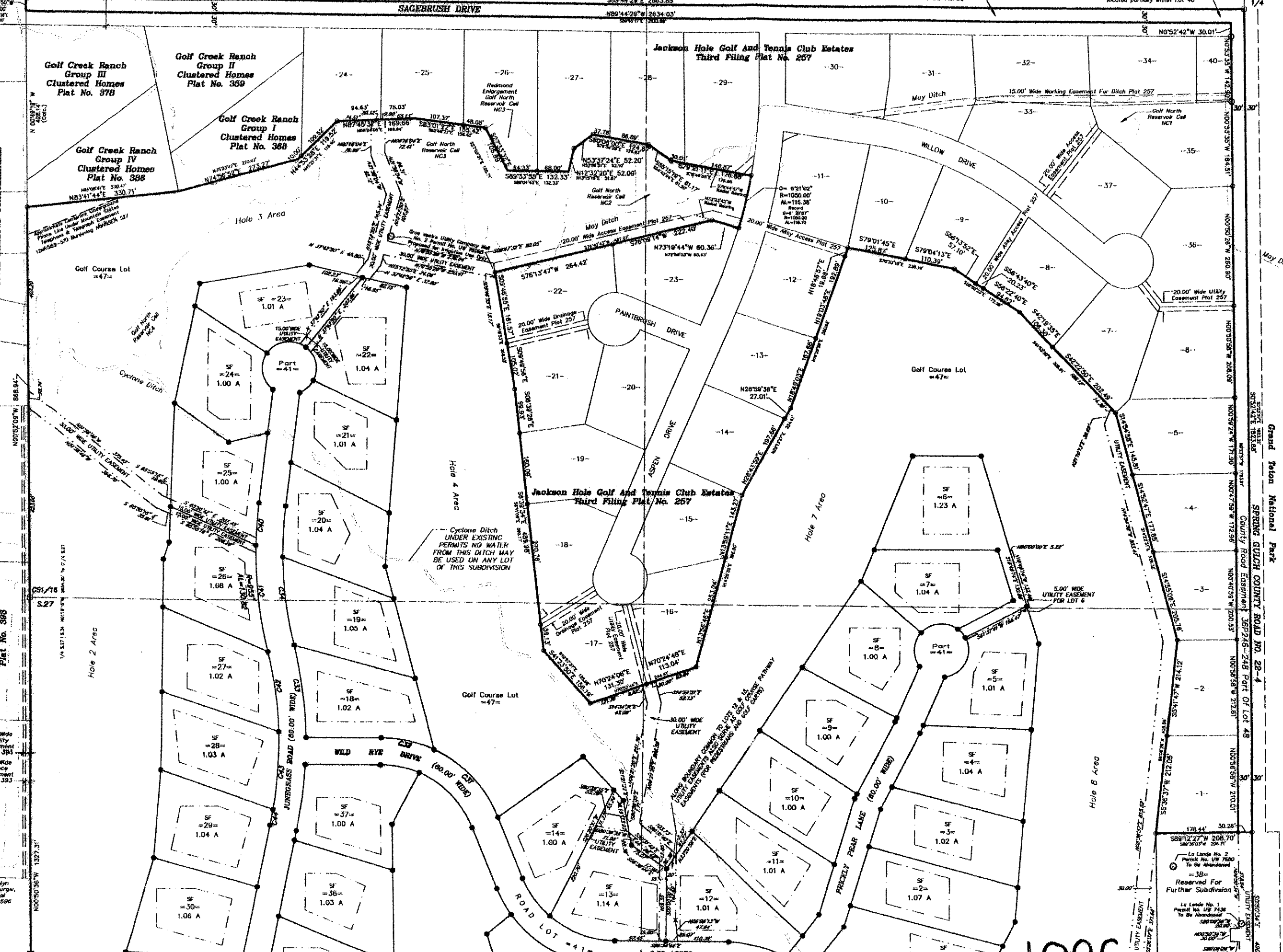
LEGEND

- Corner Record Form on file, monument recovered, EXCEPT where noted Not Found, or (NS) to indicate no search was made for the monument
- Existing well, see Sheets 3-8 for details
- = 7m Government Lot number
- ⊕ Existing lot within an adjacent subdivision
- SF Single family residential lot this subdivision
- EX Exaction lot this subdivision
- AFF Affordable housing lot this subdivision, reserved for further subdivision
- CABIN Cabin lot this subdivision, reserved for further subdivision
- Boundary The Resort at Jackson Hole Golf and Tennis Club
- - - Boundary existing lot or parcel adjacent to The Resort at Jackson Hole Golf and Tennis Club
- Boundary of a lot created by this plat
- - - Sectional subdivision line
- - - Meander line of the Gros Ventre River
- - - Boundary of an existing easement
- - - Easement centerline; see sheets 3-8 for details
- - - Boundary of an easement created by this plat or concurrently with the recordation of this plat
- - - Building envelope created by this plat
- - - Lot line or easement vacated by this plat
- - - Approximate location existing water element as labeled; ditches and reservoirs may be reconfigured, relocated or removed in the future
- - - Natural Resource Overlay District boundary where not coincident with Spring Gulch County Road Easement



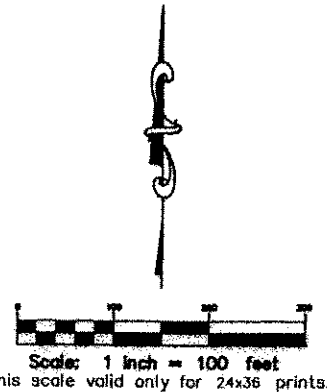
FINAL PLAT  
THE RESORT  
AT  
JACKSON HOLE GOLF AND TENNIS CLUB  
LOCATED WITHIN THE  
SE1/4 SECTION 27  
AND THE  
N1/2 AND N1/2SW1/4 SECTION 34  
T42N, R116W, 6th P.M.  
TETON COUNTY, WYOMING  
SHEET 2 OF 9  
VICINITY MAP / SUBDIVISION OVERVIEW,  
LAND USE INFORMATION & NOTES

1086



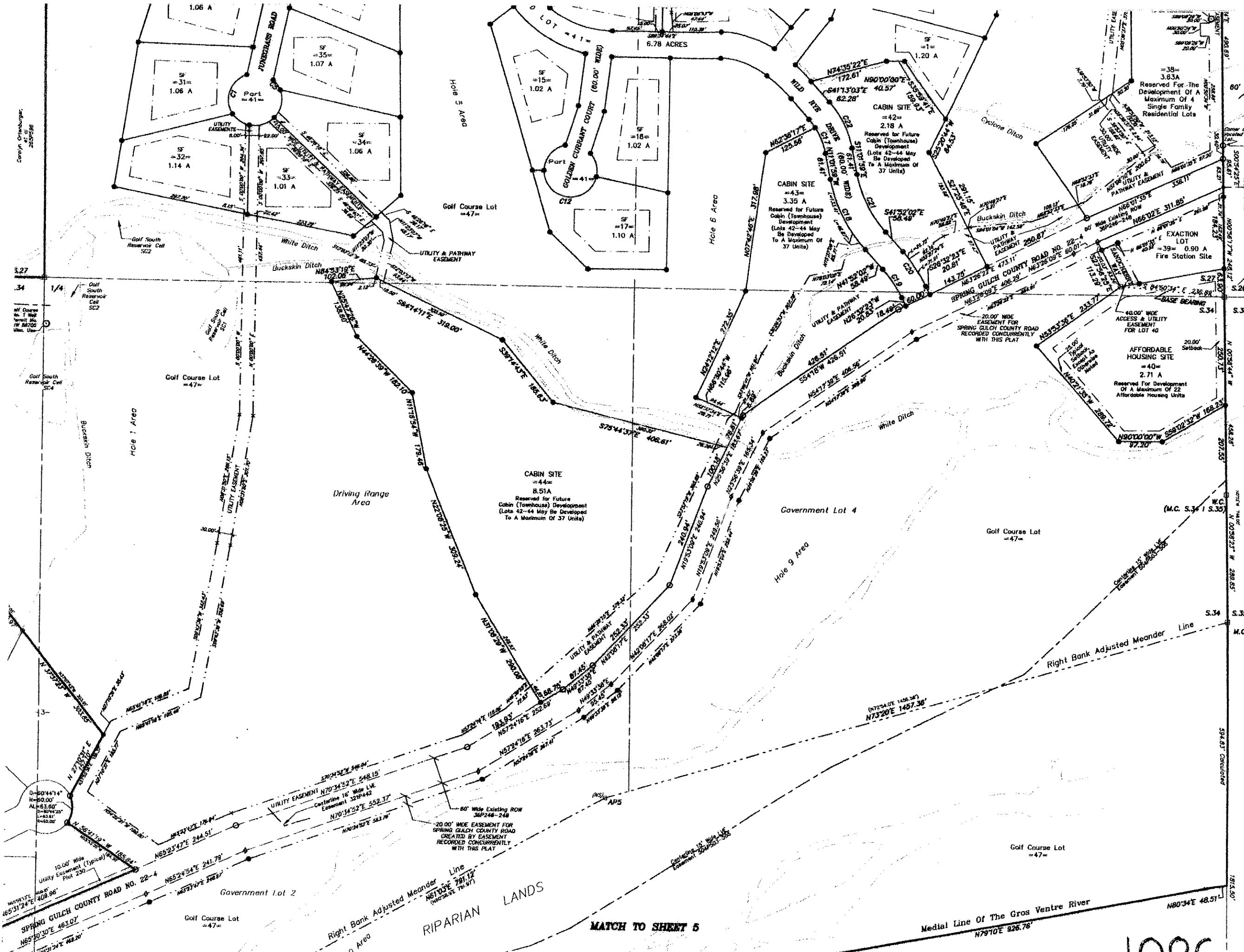
LEGEND

- Corner Record Form on file; monument recovered EXCEPT where noted Not Found, or (NF) to indicate no search was made for the monument
- Record survey monument found
- 5/8 inch diameter steel reinforcing bar with aluminum cap inscribed "PLS 3881" found
- 5/8 inch diameter steel reinforcing bar with aluminum cap inscribed "PLS 3881" found to be removed by July 1, 2004
- 5/8 inch diameter steel reinforcing bar with aluminum cap inscribed "JORGENSEN ASSOCIATES PLS 5463" to be set by July 1, 2004
- x No monument found, or set; symbol used only when deemed necessary for drawing clarity
- 7705244.1 244.1' Record plot bearing and distance
- (57178.17 154.69') Record bearing and distance, PLS 164 Map T-4489
- N70°24'08"E 131.30' Measured bearing and distance, 1989 survey
- N63°26'15"E 473.11' Measured bearing and distance, 2002-2003 survey
- S74°58'23"E 343.31' Calculated lot/boundary/Meander Line bearing and distance
- S74°58'23"E 172.69' Calculated building envelope bearing and distance
- S25°59'59"W 385.88' Calculated easement bearing and distance
- 21, -16-- Number of an existing lot adjacent to the Resort At Jackson Hole Golf And Tennis Club
- B-- Number of a lot created by this plat
- SF Single family residential lot of this subdivision
- Boundary of the Resort at Jackson Hole Golf And Tennis Club
- Boundary of a lot created by this plat
- Boundary of a lot adjacent to the Resort At Jackson Hole Golf And Tennis Club
- Boundary of an existing easement
- Centerline existing easement
- Boundary of a utility and/or private pathway easement created by this plat, except as otherwise noted
- Building envelope created by this plat
- Sectional subdivision line
- Meander Line Gros Ventre River
- Approximate edge of water, 1999 Aerial Survey

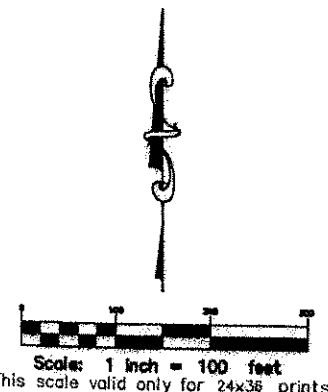


FINAL PLAT  
**THE RESORT AT JACKSON HOLE GOLF AND TENNIS CLUB**  
 LOCATED WITHIN THE  
 SE1/4 SECTION 27  
 AND THE  
 N1/2 AND N1/2SW1/4 SECTION 34  
 T42N, R116W, 6th P.M.  
 TETON COUNTY, WYOMING  
**SHEET 3 OF 9**  
 DETAILS

1086



- LEGEND**
- Corner Record Form on file; monument rec'd EXCEPT where noted Not Found, or (N/S) to indicate no search was made for the monument
  - Record survey monument found
  - 5/8 inch diameter steel reinforcing bar with aluminum cap inscribed "PLS 3881" found
  - 5/8 inch diameter steel reinforcing bar with aluminum cap inscribed "PLS 3881" found, 1 removed by July 1, 2004
  - 5/8 inch diameter steel reinforcing bar with aluminum cap inscribed "JORGENSEN ASSOC PLS 546" to be set by July 1, 2004
  - x No monument found, or set; symbol used when deemed necessary for drawing clarity
  - Record plot bearing and distance
  - Record bearing and distance, RLS 164 Map 1-4488
  - Measured bearing and distance, 1989 survey
  - Measured bearing and distance, 2002-2003 survey
  - Calculated lot/boundary/Meander Line bearing and distance
  - Calculated building envelope bearing and dist
  - Calculated easement bearing and distance
  - Number of an existing lot adjacent to The R At Jackson Hole Golf And Tennis Club
  - Number of a lot created by this plat
  - Single family residential lot of this subdivision
  - Boundary of The Resort at Jackson Hole Golf Tennis Club
  - Boundary of a lot created by this plat
  - Boundary of a lot adjacent to The Resort At Jackson Hole Golf And Tennis Club
  - Boundary of an existing easement
  - Centerline existing easement
  - Boundary of a utility and/or private pathway easement created by this plat, except as otherwise noted
  - Building envelope created by this plat
  - Sectional subdivision line
  - Meander Line Gros Ventre River
  - Approximate edge of water, 1999 Aerial Sun
  - Tie line



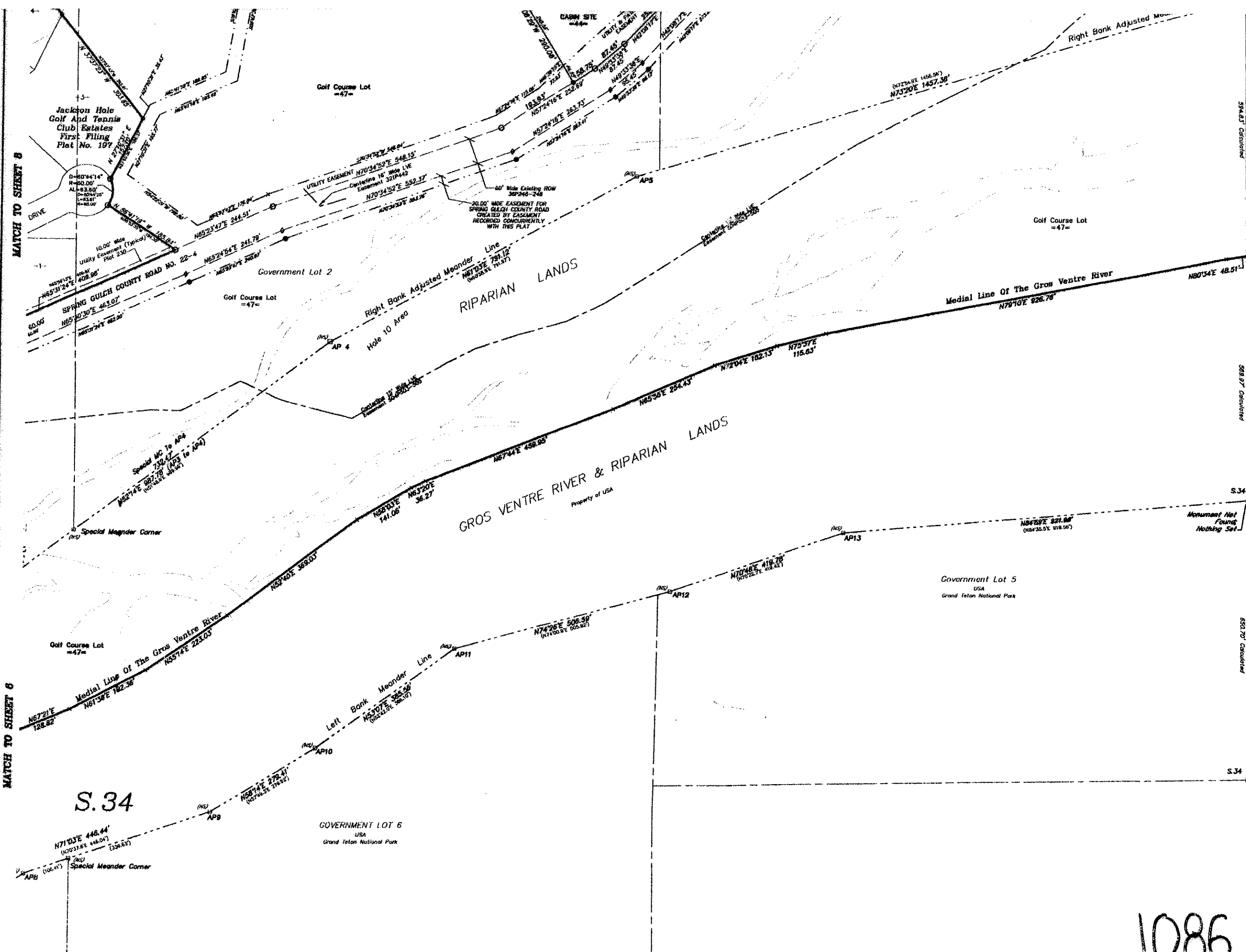
**FINAL PLAT**  
**THE RESORT**  
**AT**  
**JACKSON HOLE GOLF AND TENNIS C.**  
 LOCATED WITHIN THE  
 SE1/4 SECTION 27  
 AND THE  
 N1/2 AND N1/2SW1/4 SECTION 34  
 T42N, R118W, 6th P.M.  
 TETON COUNTY, WYOMING  
**SHEET 4 OF 9**  
 DETAILS  
 SOUTHEASTERN SUBDIVISION BOUNDARY,  
 EXACTION LOT 39,  
 AFFORDABLE HOUSING LOT 40

MATCH TO SHEET 5

1000

MATCH TO SHEET 8

MATCH TO SHEET 6



LEGEND

- Corner Record Form on file monument not found, or (NS) indicate no search was made for the monument
- Record survey monument found
- 5/8 inch diameter steel reinforcing bar x aluminum cap inscribed "PLS 3081" found
- 5/8 inch diameter steel reinforcing bar x aluminum cap inscribed "PLS 3081" found removed by July 1, 2004
- 5/8 inch diameter steel reinforcing bar x aluminum cap inscribed "JORGENSEN ASS. PLS 3483" to be set by July 1, 2004
- X No monument found, or set; symbol used when deemed necessary for drawing clarity
- N70°24'4"E 244.41' Record plot bearing and distance
- (S71°38.3'W 154.68') Record bearing and distance, RLS 104 M 7-44B
- N70°24'08"E 131.30' Measured bearing and distance, 1989 survey
- N63°26'15"E 473.11' Measured bearing and distance, 2002-20 survey
- S74°50'21"E 343.31' Calculated lot/boundary/Meander Line bearing and distance
- S74°59'21"E 172.69' Calculated building envelope bearing and distance
- S27°52'77"W 385.08' Calculated easement bearing and distance
- 21, -16- Number of an existing lot adjacent to the plat Jackson Hole Golf And Tennis Club
- =B= Number of a lot created by this plat
- SF Single family residential lot of this subdivision
- Boundary of the Resort at Jackson Hole Tennis Club
- Boundary of a lot created by this plat
- Boundary of a lot adjacent to the Resort Jackson Hole Golf And Tennis Club
- Boundary of an existing easement
- Centerline existing easement
- Boundary of a utility and/or private path easement created by this plat, except as otherwise noted
- Building envelope created by this plat
- Sectional subdivision line
- Meander Line Gros Ventre River
- Approximate edge of water, 1999 Aerial

S74°50'21"E Calculated

N70°24'08"E

S74°59'21"E

S.34

S.35

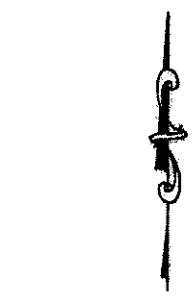
S 00°04'47"E

S69°37' Calculated

S.34

S.35

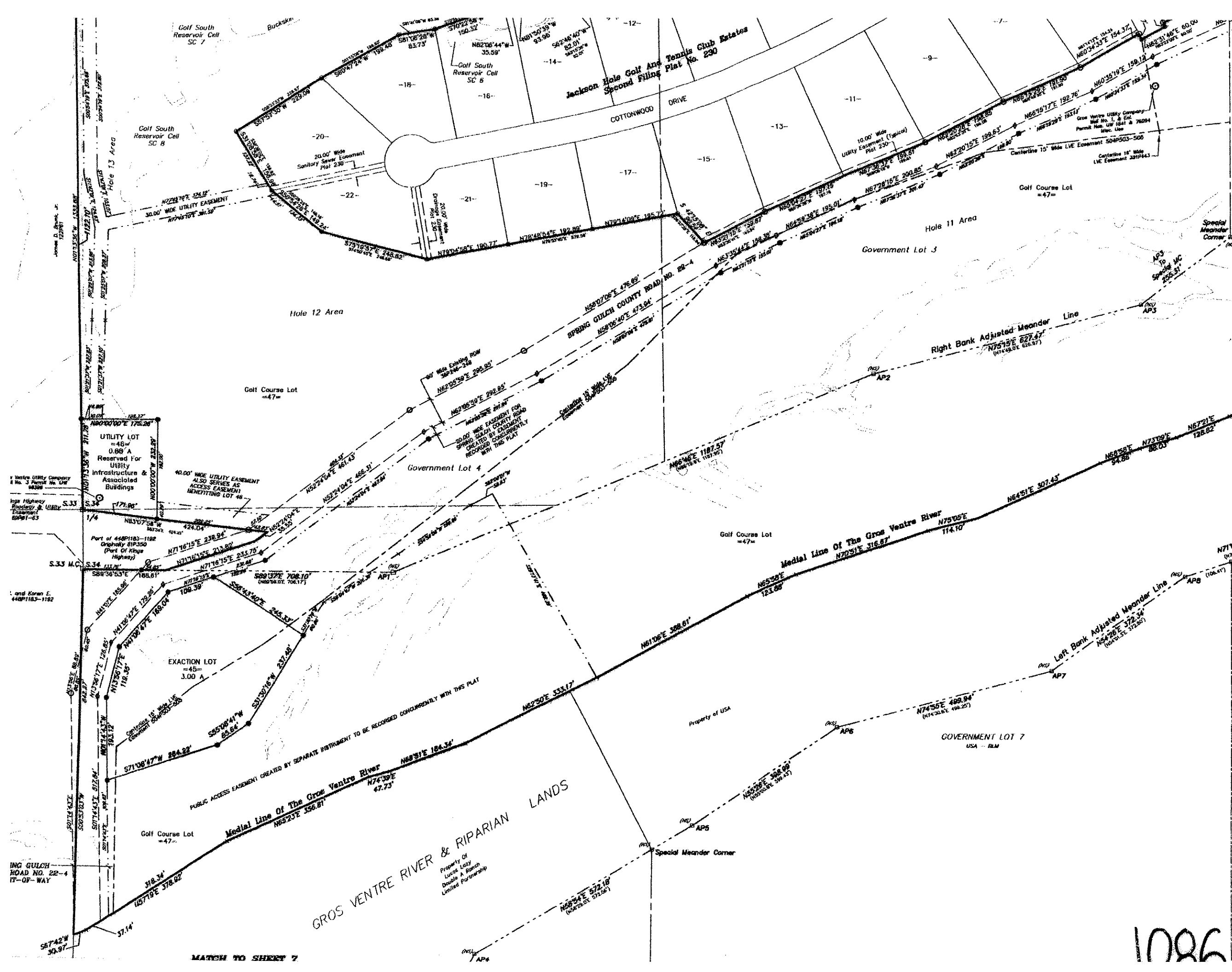
1/4



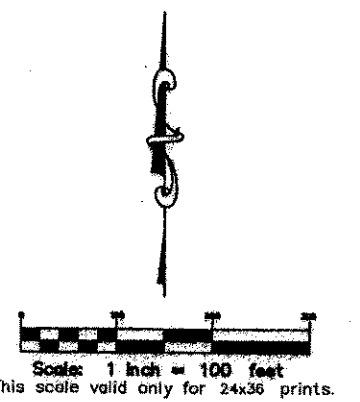
Scale: 1 inch = 100 feet  
This scale valid only for 24x36 prints

FINAL PLAT  
THE RESORT  
AT  
JACKSON HOLE GOLF AND TENNIS  
LOCATED WITHIN THE  
SE1/4 SECTION 27  
AND THE  
N1/2 AND N1/2SW1/4 SECTION 34  
T42N, R116W, 6th P.M.  
TETON COUNTY, WYOMING  
SHEET 5 OF 9  
DETAILS  
SOUTHERN SUBDIVISION BOUNDARY

1086



- LEGEND**
- Corner Record Form on file; monument recovered EXCEPT where noted Not Found, or (NS) to indicate no search was made for the monument
  - Record survey monument found
  - 5/8 inch diameter steel reinforcing bar with aluminum cap inscribed "PLS 3881" found
  - ◊ 5/8 inch diameter steel reinforcing bar with aluminum cap inscribed "PLS 3881" found, to be removed by July 1, 2004
  - 5/8 inch diameter steel reinforcing bar with aluminum cap inscribed "JORGENSEN ASSOCIATES PLS 3483" to be met by July 1, 2004
  - x No monument found, or set; symbol used, only when deemed necessary for drawing clarity
- MATCH TO SHEET 6**
- N7032'44"E 244.41' Record plot bearing and distance
  - (S71'38.3"W 154.69') Record bearing and distance, RLS 184 Map T-4488
  - N70'24'08"E 131.30' Measured bearing and distance, 1999 survey
  - N63'26'15"E 473.11' Measured bearing and distance, 2002-2003 survey
  - S74'59'23"E 343.31' Calculated lot/boundary/Meander Line bearing and distance
  - S74'59'23"E 172.69' Calculated building envelope bearing and distance
  - S57'32'17"W 383.68' Calculated easement bearing and distance
  - 21, -16-- Number of an existing lot adjacent to the Resort At Jackson Hole Golf And Tennis Club
  - =B-- Number of a lot created by this plat
  - SF Single family residential lot of this subdivision
- Boundary of The Resort at Jackson Hole Golf And Tennis Club
  - Boundary of a lot created by this plat
  - Boundary of a lot adjacent to The Resort At Jackson Hole Golf And Tennis Club
  - Boundary of an existing easement
  - - - Centerline existing easement
  - - - Boundary of a utility and/or private pathway easement created by this plat, except as otherwise noted
  - - - Building envelope created by this plat
  - - - Sectional subdivision line
  - - - Meander Line Gros Ventre River
  - - - Approximate edge of water, 1999 Aerial Survey

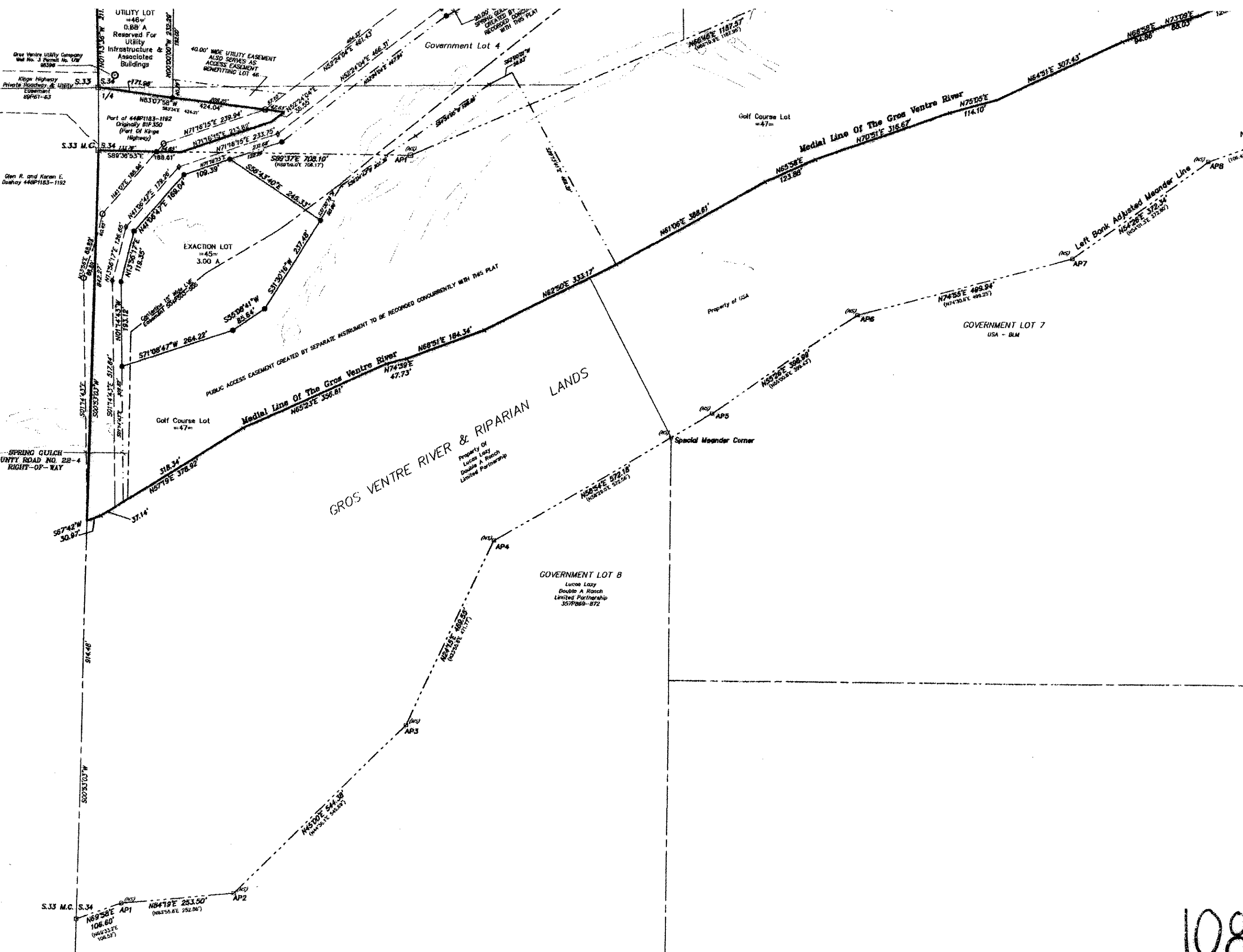


**FINAL PLAT  
THE RESORT  
AT  
JACKSON HOLE GOLF AND TENNIS CLUB**  
 LOCATED WITHIN THE  
 SE1/4 SECTION 27  
 AND THE  
 N1/2 AND N1/2SW1/4 SECTION 34  
 T42N, R116W, 6th P.M.  
 TETON COUNTY, WYOMING

**SHEET 6 OF 9**  
 DETAILS  
 SOUTHWESTERN SUBDIVISION BOUNDARY,  
 EXACTION LOT 48,  
 UTILITY LOT 48.

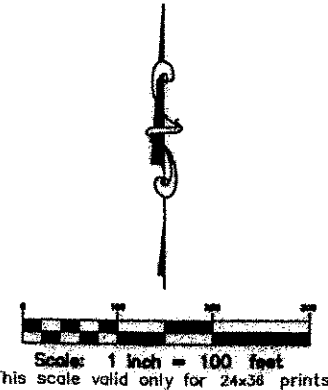
1086

MATCH TO SHEET 7



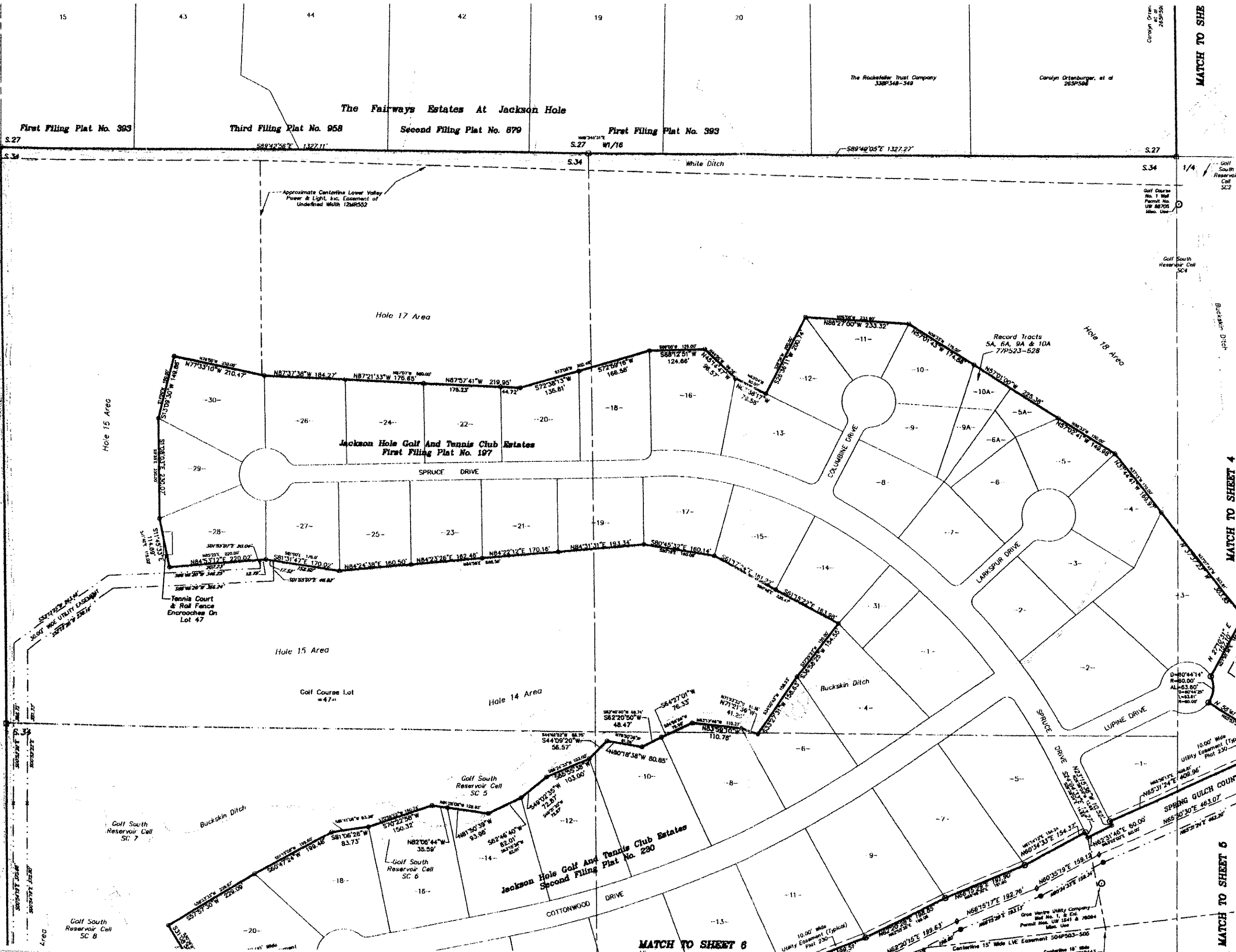
MATCH TO SHEETS 6 & 6

- LEGEND**
- Corner Record Form on file; monument recovered, EXCEPT where noted Not Found, or (NS) to indicate no search was made for the monument
  - Record survey monument found
  - 5/8 inch diameter steel reinforcing bar with aluminum cap inscribed "PLS 3881" found
  - 5/8 inch diameter steel reinforcing bar with aluminum cap inscribed "PLS 3881" found, to be removed by July 1, 2004
  - 5/8 inch diameter steel reinforcing bar with aluminum cap inscribed "KROENKES ASSOCIATES PLS 5463" to be set by July 1, 2004
  - x No monument found, or set; symbol used only when elevated necessary for drawing clarity
- Record plot bearing and distance**
- N7052'41"E 244.41'
  - (S7138.3'W 154.89')
  - N70'24'08"E 131.30'
  - N63'26'15"E 473.11'
  - S74'59'23"E 343.31'
  - S74'59'23"E 172.69'
  - S2'52'19"W 385.89'
  - 21, - 16--
  - =B=
  - SF
- Record bearing and distance, RLS 104 Map 1-4488**
- Measured bearing and distance, 1989 survey**
- Measured bearing and distance, 2002-2003 survey**
- Calculated lot/boundary/Meander Line bearing and distance**
- Calculated building envelope bearing and distance**
- Calculated easement bearing and distance**
- Number of an existing lot adjacent to The Resort At Jackson Hole Golf And Tennis Club**
- Number of a lot created by this plat**
- Single family residential lot of this subdivision**
- Boundary of The Resort at Jackson Hole Golf And Tennis Club**
- Boundary of a lot created by this plat**
- Boundary of a lot adjacent to The Resort At Jackson Hole Golf And Tennis Club**
- Boundary of an existing easement**
- Centerline existing easement**
- Boundary of a utility and/or private pathway easement created by this plat, except as otherwise noted**
- Building envelope created by this plat**
- Sectional subdivision line**
- Meander Line Gros Ventre River**
- Approximate edge of water, 1989 Aerial Survey**

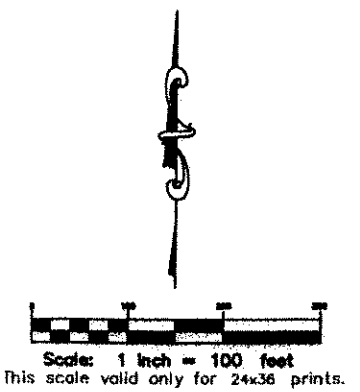


**FINAL PLAT**  
**THE RESORT**  
**AT**  
**JACKSON HOLE GOLF AND TENNIS CLUB**  
 LOCATED WITHIN THE  
 SE1/4 SECTION 27  
 AND THE  
 N1/2 AND N1/2SW1/4 SECTION 34  
 T42N, R110W, 6th P.M.  
 TETON COUNTY, WYOMING  
**SHEET 7 OF 9**  
 DETAILS  
 WESTERN PORTION  
 GROS VENTRE RIVER  
 LEFT BANK MEANDER LINE

1086



- LEGEND**
- Corner Record Form on file; monument not found EXCEPT where noted Not Found, or (N/S) to indicate no search was made for the monument
  - Record survey monument found
  - 5/8 inch diameter steel reinforcing bar with aluminum cap inscribed "PLS 3881" found
  - ◇ 5/8 inch diameter steel reinforcing bar with aluminum cap inscribed "PLS 3881" found, it removed by July 1, 2004
  - 5/8 inch diameter steel reinforcing bar with aluminum cap inscribed "JORGENSEN ASSOCI PLS 5463" to be set by July 1, 2004
  - x No monument found, or not; symbol used, when deemed necessary for drawing clarity
  - N70°24'44"E 244.41' Record plot bearing and distance
  - (S71°38'3"W 154.89') Record bearing and distance, RLS 184 Map T-4488
  - N70°24'08"E 131.30' Measured bearing and distance, 1998 survey
  - N63°26'15"E 473.11' Measured bearing and distance, 2002-2003 survey
  - S74°50'23"E 343.31' Calculated lot/boundary/Meander Line bearing distance
  - S74°50'23"E 172.69' Calculated building envelope bearing and dist
  - S2°52'19"W 105.88' Calculated easement bearing and distance
  - 21, -15- Number of an existing lot adjacent to The 1 At Jackson Hole Golf And Tennis Club
  - =B= Number of a lot created by this plat
  - SF Single family residential lot of this subdivision
  - Boundary of The Resort at Jackson Hole Golf Tennis Club
  - Boundary of a lot created by this plat
  - Boundary of a lot adjacent to The Resort at Jackson Hole Golf And Tennis Club
  - Boundary of an existing easement
  - Centerline existing easement
  - Boundary of a utility and/or private pathway, easement created by this plat, except as otherwise noted
  - Building envelope created by this plat
  - Sectional subdivision line
  - Meander Line Gros Ventre River
  - Approximate edge of water, 1998 Aerial Sur



**FINAL PLAT  
THE RESORT  
AT  
JACKSON HOLE GOLF AND TENNIS C**  
 LOCATED WITHIN THE  
 SE1/4 SECTION 27  
 AND THE  
 N1/2 AND N1/2SW1/4 SECTION 34  
 T42N, R116W, 6th P.M.  
 TETON COUNTY, WYOMING  
**SHEET 8 OF 9**  
 DETAILS  
 WESTERN SUBDIVISION BOUNDARY  
 & EASEMENTS

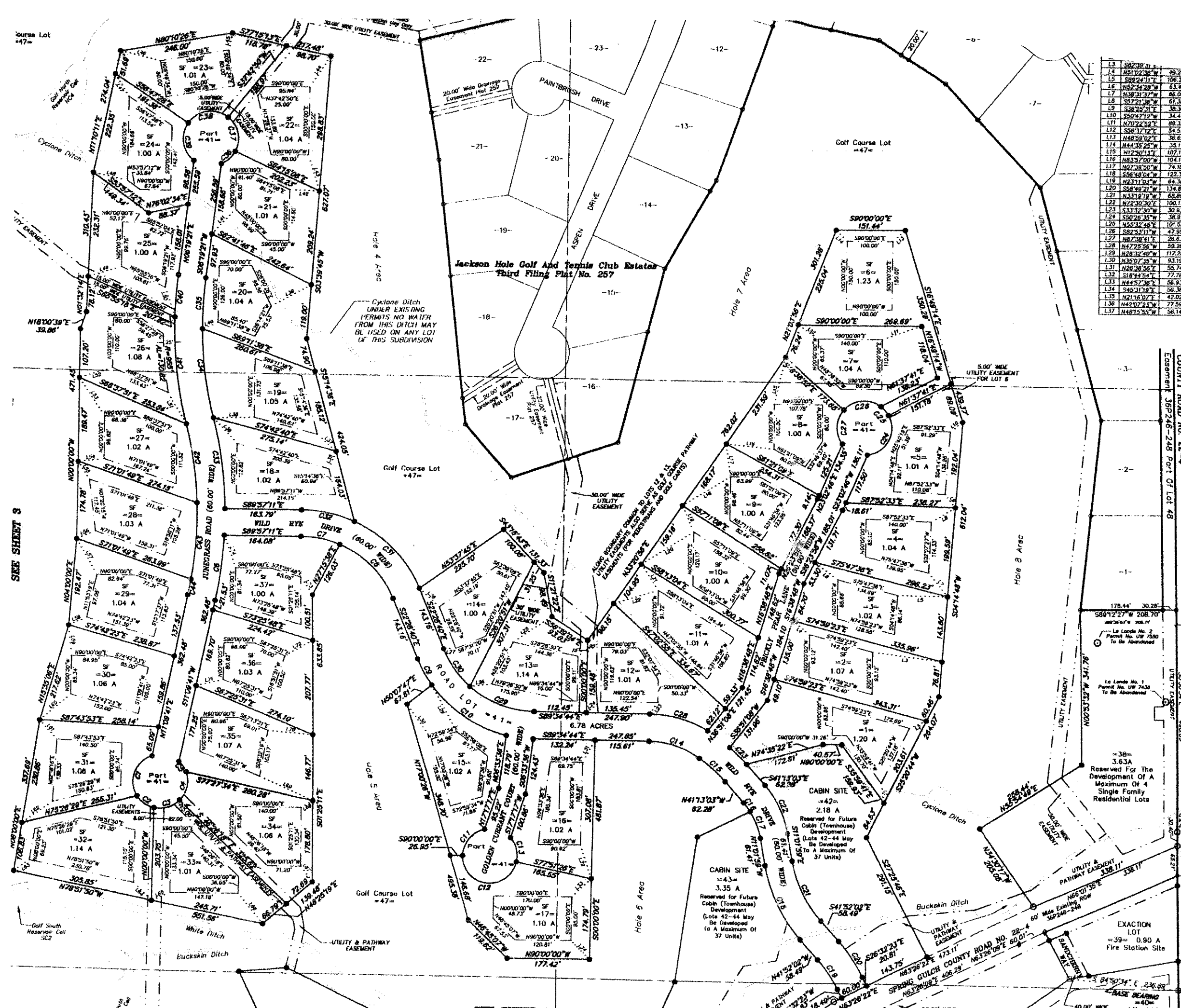
1086

MATCH TO SHEET

MATCH TO SHEET 4

MATCH TO SHEET 6

MATCH TO SHEET 6



L3	S8235.31'E	49.28	L42	S8714.04'E	84.22
L4	N6112.38'W	106.24	L43	N7235.38'W	81.22
L5	S8924.11'E	106.24	L44	N3314.55'E	81.22
L6	N6234.28'W	63.41	L45	N1135.54'E	37.80
L7	N3831.37'W	46.06	L46	N7846.44'W	86.40
L8	S4721.36'W	61.38	L47	N3139.58'W	37.61
L9	S2626.31'E	38.36	L48	S7737.24'E	74.23
L10	S9047.12'W	34.44	L49	N7200.19'E	74.21
L11	N7022.52'E	89.35	L50	S1972.37'E	68.50
L12	S6637.12'E	54.53	L51	S2947.18'E	81.59
L13	N4639.02'E	38.65	L52	N7149.28'E	73.70
L14	N4439.25'W	35.11	L53	N3232.04'W	101.34
L15	N4239.17'E	107.10	L54	S8212.15'W	95.51
L16	N8357.00'W	104.10	L55	N3148.10'W	47.44
L17	N0239.50'W	74.18	L56	S6948.14'W	43.85
L18	S6649.04'W	122.31	L57	S2837.25'E	91.04
L19	N2311.03'W	64.38	L58	N6504.20'E	42.37
L20	S4649.21'W	134.82	L59	N0617.09'W	67.11
L21	N4317.12'W	68.89	L60	N4849.21'W	87.44
L22	N2330.30'E	100.17	L61	S4234.48'E	77.78
L23	S1312.50'W	30.93	L62	S4339.14'W	80.82
L24	S2026.32'W	36.91	L63	N4434.05'E	41.31
L25	N5532.48'E	101.53	L64	S4607.56'E	55.48
L26	S8233.11'W	47.95	L65	N6814.17'E	43.70
L27	N2838.41'E	28.63	L66	N4838.36'W	84.49
L28	N4725.56'W	59.26	L67	S3777.19'E	42.50
L29	N2832.40'W	117.28	L68	N5638.56'E	78.85
L30	N3927.35'W	93.19	L69	S6520.56'E	127.42
L31	N2838.56'E	55.74	L70	S6930.53'E	97.22
L32	S1824.54'E	77.78	L71	N2840.03'E	59.68
L33	N4457.36'E	58.93	L72	N5833.10'E	68.82
L34	S4631.18'E	56.38	L73	S4433.28'E	46.35
L35	N1216.07'E	42.02	L74	N1942.05'W	76.95
L36	N4207.31'W	77.59			
L37	N4815.53'W	56.14			

- LEGEND**
- Corner Record Form on file; monument recovered, EXCEPT where noted Not Found, or (NS) to indicate no search was made for the monument
  - Record survey monument found
  - 5/8 inch diameter steel reinforcing bar with aluminum cap inscribed "PLS 3881" found
  - 5/8 inch diameter steel reinforcing bar with aluminum cap inscribed "PLS 5881" found, to be removed by July 1, 2004
  - 5/8 inch diameter steel reinforcing bar with aluminum cap inscribed "KINGENSEN ASSOCIATES PLS 5463" to be set by July 1, 2004
  - x No monument found, or set symbol used, only when deemed necessary for drawing clarity
  - N7024'08" 131.30' Record plot bearing and distance
  - (S7138'31" 154.88') Record bearing and distance, PLS 184 Map T-4488
  - N7024'08" 131.30' Measured bearing and distance, 1999 survey
  - N6326'15" 473.11' Measured bearing and distance, 2002-2003 survey
  - S7459'23" 343.31' Calculated lot/boundary/meander line bearing and distance
  - S7459'23" 172.69' Calculated building envelope bearing and distance
  - S2357'19" 268.88' Calculated easement bearing and distance
  - 21, -16- Number of an existing lot adjacent to the Resort At Jackson Hole Golf And Tennis Club
  - =8= Number of a lot created by this plat
  - SF Single family residential lot of this subdivision
  - Boundary of the Resort At Jackson Hole Golf And Tennis Club
  - Boundary of a lot created by this plat
  - Boundary of a lot adjacent to the Resort At Jackson Hole Golf And Tennis Club
  - Boundary of an existing easement
  - Centerline existing easement
  - Boundary of a utility and/or private pathway easement created by this plat, except as otherwise noted
  - Building envelope created by this plat
  - Sectional subdivision line
  - Meander Line Gros Ventre River
  - Approximate edge of water, 1998 Aerial Survey
  - Tie line

**FINAL PLAT**  
**THE RESORT**  
**AT**  
**JACKSON HOLE GOLF AND TENNIS CLUB**  
 LOCATED WITHIN THE  
 SE1/4 SECTION 27  
 AND THE  
 N1/2 AND N1/2SW1/4 SECTION 34  
 T42N, R116W, 6th P.M.  
 TETON COUNTY, WYOMING

SHEET 9 OF 9  
 DETAILS

SEE SHEETS 1 & 2  
 FOR NOTES  
 SHEETS 3 & 4  
 FOR DETAILS OF  
 EASEMENTS  
 SHOWN HEREON; AND  
 THE DECLARATION OF  
 COVENANTS, CONDITIONS AND  
 RESTRICTIONS RECORDED  
 CONCURRENTLY WITH THIS  
 PLAT FOR DETAILS OF

1086