

**CURVE DATA**

NO	Δ	T	R	COMMENT
1	90°	280.0	280.0	DATA
2	100°	186.83	156.35	"
3	84°30'	72.08	76.81	"
4	26°30'	140.0	514.56	"
5	75°13'55"	164.45	216.54	"
6	90°	465.0	465.0	"
7	72°54'	325.0	489.95	"
8	79°24'	250.0	301.08	"
9	108°30'	405.0	435.5	"
10	33°30'	200.0	664.55	"
11	42°09'01"	112.47	310.00	DATA
12	90°	30.0	30.0	"
13	62°30'	60.87	99.65	"
14	88°30'	262.95	269.52	"
15	110°30'	123.85	85.15	"
16	77°30'	78.27	97.55	"
17	90°	20.0	20.0	"
18	28°	104.72	420.0	"
19	90°	80.0	80.0	"
20	75°	114.95	228.0	"
21	88°07'	80.46	85.14	"
22	48°46'	87.85	185.0	"
23	56°14'	232.43	435.0	"
24	106°55'	1008.02	115.81	"
25	41°51'	89.93	495.0	"
26	45°04'	364.41	114.35	"
27	122°48'	154.41	84.19	"
28	62°30'	80.0	296.45	"
29	05°29'	188.19	3,929.72	"
30	64°00'	370.0	538.36	"
31	80°00'	147.82	200.0	"
32	75°00'	192.86	199.22	"

NOTE:  
ALL CURVES NOT LISTED  
HAVE THE FOLLOWING DATA  
Δ: 90°  
T: 45.0  
R: 45.0

**CERTIFICATE OF OWNERS**

KNOW ALL MEN BY THESE PRESENTS:  
THAT THE JACKSON STATE BANK, A WYOMING BANKING CORPORATION AS TRUSTEE, AND CHARLES E. LEWTON, HEREBY CERTIFY THAT THEY ARE THE OWNERS IN FEE SIMPLE OF THOSE LANDS SHOWN ON THIS PLAT, TO BE KNOWN AS 'RAFTER J RANCH SUBDIVISION' AND MORE PARTICULARLY DESCRIBED IN THE CERTIFICATE OF SURVEYOR.  
THAT THE SUBDIVISION OF THESE LANDS SHOWN HERE ON IS WITH FREE CONSENT AND IN ACCORDANCE WITH THE DEEDS OF THE UNDERSIGNED OWNERS.  
THAT THE ROADS, STREETS, AND EASEMENTS ARE DEDICATED TO PUBLIC USE FOR TRAVEL, UTILITIES & DRAINAGE AS INDICATED.  
THAT MAINTENANCE OF SAID ROADS, STREETS, AND EASEMENTS SHALL BE RESERVED TO THE HOME OWNERS ASSOCIATION. NO PUBLIC MAINTENANCE OF STREETS AND ROADS, ADEQUACY OF FLOOD CONTROL BEINGS THAT THE FLOOD CONTROL BEINGS SHALL BE DEDICATED TO THE USE OF EACH HOME OWNER WITHIN THE SUBDIVISION, MAINTENANCE AND REPAIR RESPONSIBILITIES BEING RESERVED TO THE HOME OWNERS ASSOCIATION.  
THAT THE TOTAL MAXIMUM DENSITY FOR LOTS 323 TO 329 BOTH INCLUSIVE, SHALL NOT EXCEED 168 UNITS NOR A DENSITY EXCEEDING 5 UNITS PER ACRE.  
THAT THIS SUBDIVISION IS SUBJECT TO COVENANTS AND RESTRICTIONS THAT WILL BE FILED OF RECORD.  
STATE OF WYOMING } ss  
COUNTY OF TETON } ss  
TRUST OFFICER } CHARLES E. LEWTON (DEVELOPER)  
THE FOREGOING INSTRUMENT WAS ACKNOWLEDGED BEFORE ME BY Frank J. Grimes & Charles E. Lewton THIS 22nd DAY OF August, 1978  
WITNESS MY HAND & OFFICIAL SEAL.  
MY COMMISSION EXPIRES

**CERTIFICATE OF SURVEYOR**

I FRANK J. GRIMES A DULY LICENSED SURVEYOR AS PRESCRIBED BY WYOMING STATUTES, BY AUTHORIZATION OF THE OWNERS HAVE SUBDIVIDED THE LAND DESCRIBED HERE-IN, INTO LOTS, STREETS, EASEMENTS, AND PLANNED UNIT DEVELOPMENTS AREAS, TO BE KNOWN AS 'RAFTER J RANCH SUBDIVISION'.  
I HEREBY CERTIFY: THAT SAID SUBDIVISION BOUNDARIES AS SHOWN WERE MADE FROM NOTES TAKEN DURING ACTUAL SURVEYS CONDUCTED BY MYSELF OR UNDER MY SUPERVISION DURING APRIL, MAY, AUGUST AND OCTOBER, 1977 AND SUPPLEMENTED AS SHOWN BY BLM RECORDS FROM THAT DEPENDENT RESURVEY PLAT, APPROVED MARCH, 1971.  
THAT ALL LOTS, STREETS, EASEMENTS, AND PLANNED UNIT DEVELOPMENTS AREAS WILL BE MONUMENTED AS SHOWN, BY 30 JUNE 1978. THE SUBDIVISION INCLUDES: 5E 1/4 SW 1/4 & SW 1/4 SE 1/4 OF SECTION 8, THE NW 1/4 & W 1/2 NE 1/4 SECTION 17, NE 1/4 SECTION 18, ALL IN T40N R116W TETON COUNTY, WYOMING, EXCEPTING THEREFROM THOSE RECORD TRACTS FOUND IN; BOOK 11 DEEDS PAGE 505 & 506; BOOK 46 PHOTOS PAGE 424 & 425; BOOK 11 PHOTOS PAGE 432, RETAINED IN TETON COUNTY CLERKS OFFICE.  
THAT THE DEVELOPED AREA AS SHOWN ENCOMPASSES 194.61 ACRES MORE OR LESS.  
THAT THE TOTAL SUBDIVISION ACREAGE AS SHOWN IS 447.83 ACRES MORE OR LESS.  
THAT THE LOTS NUMBERED 1-326 ARE SUBJECT TO THE INDICATED EASEMENTS OF TYPE, WIDTH, AND LENGTH AS SHOWN ON THIS PLAT.  
STATE OF WYOMING } ss  
COUNTY OF TETON } ss  
THE FOREGOING INSTRUMENT WAS ACKNOWLEDGED BEFORE ME BY FRANK J. GRIMES THIS 22nd DAY OF August, 1978 WITNESS MY HAND & OFFICIAL SEAL.  
August 16, 1978  
MY COMMISSION EXPIRES

**CURVE DATA CONT**

NO	Δ	T	R	COMMENT
33	50°00'	128.71	276.02	DATA
34	86°00'	260.00	478.82	"
35	34°05'	85.85	263.75	NOT DATA
36	62°51'	68.19	173.75	NOT DATA
574 58 DELETED				
39	115°00'	204.06	130.00	DATA
40	42°00'	160.47	418.50	"
41	180°00'		90.00	"
42	90°00'	195.0	195.0	"
43	50°00'	62.25	193.50	"
44	147°00'	200.0	59.29	"
45	35°00'	144.17	457.26	"
46	48°00'	114.99	278.15	"
47	13°00'	108.20	949.62	"
48	75°00'	149.97	195.39	"
49	9°30'00"	175.0	3108.69	"
50	88°00'00"	100.0	103.52	"
51	131°01'15"	140.0	63.77	"
52	25°32'01"	121.90	586.56	"
53	15°12'05"	107.71	807.65	"
63A	82°30'	45.00	51.31	"

**LEGEND**

- - BLM BRASS CAP RECORDATION FORM FILED
- - BLM TYPE BRASS CAP - SET BY NELSON ENGINEERING RLS 578 RECORDATION FORM FILED
- - BLM TYPE BRASS CAP - SET BY SURVEYOR SCHERBEL LTD RLS-144
- NOTE: DOUBLE CROSSHATCHING INDICATES RAFTER J RANCH SUBDIVISION, SINGLE CROSS-HATCHING INDICATES UNDEVELOPED REMAINDER OF RAFTER J RANCH
- - FND. SPIKE SET BY BLM AS CALLED OUT IN RESURVEY NOTES.



**ENGINEERS CERTIFICATION**

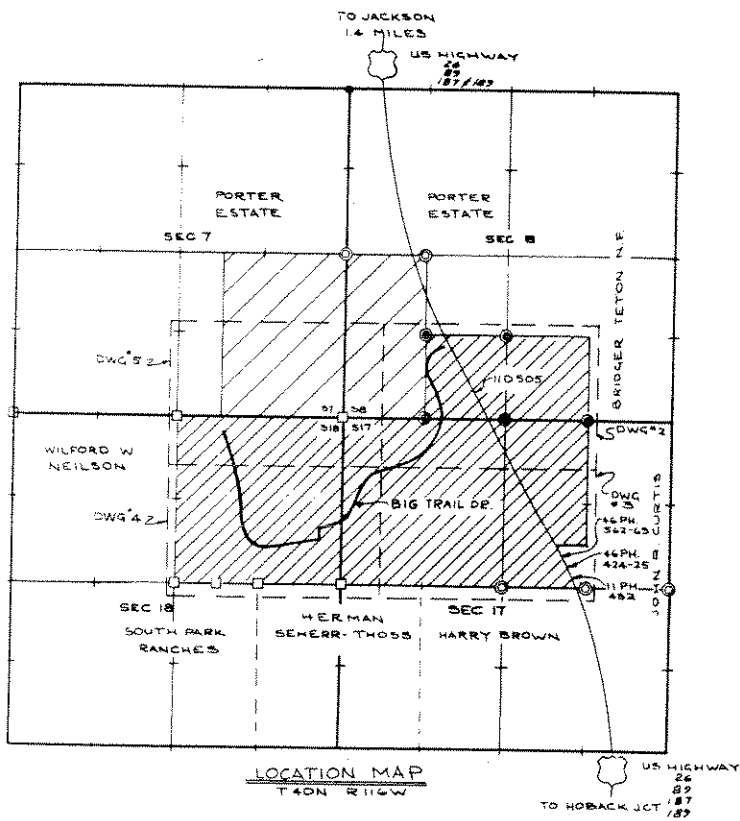
IN ACCORDANCE WITH WYOMING STATUTE 18-289.15 I MICKEY M. YAMASHIRO, A LICENSED ENGINEER IN THE STATE OF WYOMING HEREBY CERTIFY THAT: (1) THE SEWAGE DISPOSAL SYSTEM DESIGNED FOR RAFTER J RANCH SUBDIVISION IS ADEQUATE TO HANDLE DOMESTIC WASTE GENERATED BY THE DESIGN POPULATION; (2) THE SYSTEM IS ACCEPTABLE WITH RESPECT TO DISPOSAL REQUIREMENTS OF THE STATE OF WYOMING; (3) THE SYSTEM WILL PREFORM WITHIN THOSE REQUIREMENTS AND CONSTRAINTS POSED BY LOCAL TOPOGRAPHY, SOIL CONDITIONS, SURFACE & GROUND WATER CONDITIONS, PROVIDING THE TREATMENT FACILITY IS OPERATED CORRECTLY; THAT THE DOMESTIC WATER SUPPLY SYSTEM WILL MEET COUNTY, STATE, AND FEDERAL REQUIREMENTS, THAT THE SUPPLY IS ADEQUATE AND SAFE, PROVIDING THE SYSTEM IS OPERATED CORRECTLY.  
STATE OF WYOMING } ss  
COUNTY OF TETON } ss  
THE FOREGOING INSTRUMENT WAS ACKNOWLEDGED BEFORE ME BY ALBERT L. NELSON THIS 22nd DAY OF August, 1978 WITNESS MY HAND & OFFICIAL SEAL.  
August 16, 1978  
MY COMMISSION EXPIRES

**CERTIFICATE OF APPROVAL**

THE RAFTER J RANCH SUBDIVISION WHICH IS IN PORTIONS OF SECTION 8, 17, & 18 OF T40N R116W IS HEREBY APPROVED BY THE BOARD OF COUNTY COMMISSIONERS OF TETON COUNTY, WYOMING, IN ACCORDANCE WITH SECTION 34-114 AND SECTION 18-289.10 THROUGH 18-289.24 WYOMING STATUTES 1957 AS AMENDED, AND SUBJECT TO THE PROVISIONS OF A RESOLUTION FOR APPROVAL OF SUBDIVISIONS AND TOWNSITE PLATS AS ADOPTED ON 1 AUGUST 1967 & THE SUBDIVISION RESOLUTION EFFECTIVE, 1 JANUARY 1973.  
ATTEST: William L. Sance  
COUNTY CLERK & EX OFFICIO  
TETON COUNTY

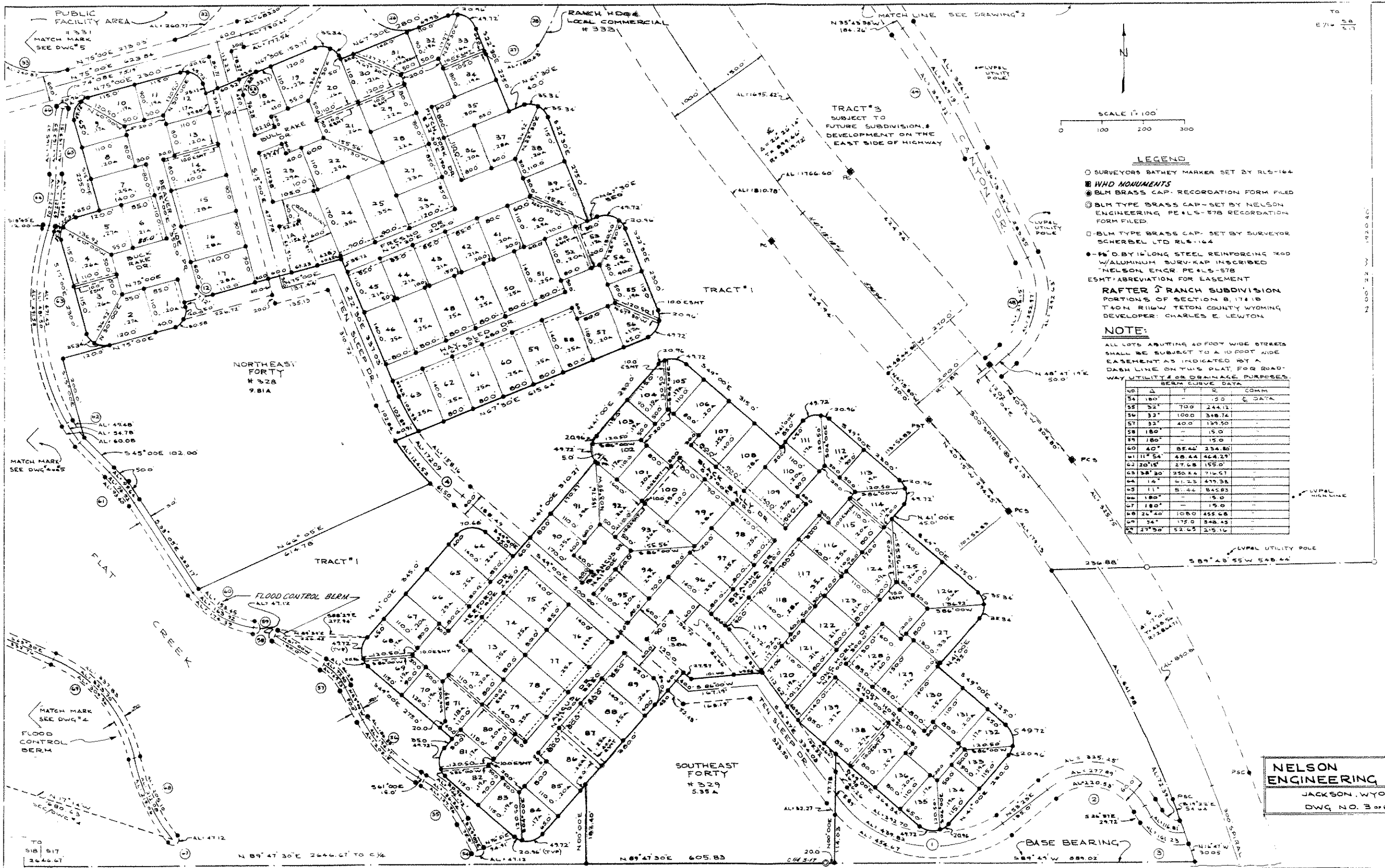
STATE OF WYOMING } ss # 177458  
COUNTY OF TETON } ss  
FILED FOR RECORD IN MY OFFICE THIS 24th DAY OF JUNE, 1978, AT 10:11 AM AND RECORDED AS PLAT NO. 22c PAID 2500.  
William L. Sance  
COUNTY CLERK & EX OFFICIO  
REGISTER OF DEEDS

RAFTER J RANCH SUBDIVISION  
PORTIONS OF SECTION 8, 17, & 18  
T40N R116W TETON COUNTY, WYOMING  
DEVELOPER: CHARLES E. LEWTON

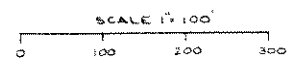


DRAWING NO. 1-49-77  
 JOB TITLE RAFTER J RANCH SUBDIVISION  
 LEGAL DATA  
 DRAWING TITLE  
 SURVEYOR FRANK J. GRIMES  
 REGISTERED PROFESSIONAL SURVEYOR  
 WYOMING  
 LICENSE NO. 10250  
 EXPIRES 4-9-77





TO  
E 714 5.6  
S 17 5.7



**LEGEND**

- SURVEYORS BATHEYS MARKER SET BY RLS-164
- W/D MONUMENTS
- BLM BRASS CAP - RECORDATION FORM FILED
- ⊙ BLM TYPE BRASS CAP - SET BY NELSON ENGINEERING PE #LS-578 RECORDATION FORM FILED
- BLM TYPE BRASS CAP - SET BY SURVEYOR SCHERBEL LTD RLS-164
- 1/2" Ø BY 15' LONG STEEL REINFORCING ROD W/ ALUMINUM SURV. CAP INSCRIBED "NELSON ENGR PE #LS-578"
- ESMT: ABBREVIATION FOR EASEMENT

**RAFTER J RANCH SUBDIVISION**  
PORTIONS OF SECTION 8, 17E18  
T40N R10W TETON COUNTY WYOMING  
DEVELOPER: CHARLES E. LEWTON

**NOTE:**

ALL LOTS ADJACENT TO 40 FOOT WIDE STREETS SHALL BE SUBJECT TO A 10 FOOT WIDE EASEMENT AS INDICATED BY A DASH LINE ON THIS PLAT, FOR ROADWAY UTILITY OR DRAINAGE PURPOSES.

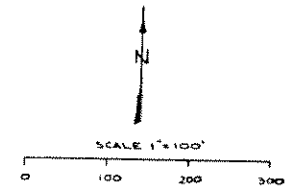
NO	Δ	T	R	COMM
54	180°	-	15.0	E DATA
55	32°	700	244.72	
56	32°	1000	318.74	
57	32°	400	139.50	
58	180°	-	15.0	
59	180°	-	15.0	
60	40°	85.44	234.80	
61	11° 54'	48.44	464.27	
62	20° 15'	27.68	155.0'	
63	38° 30'	250.24	716.57	
64	14°	41.23	477.38	
65	11°	81.44	845.83	
66	180°	-	15.0	
67	180°	-	15.0	
68	26° 20'	108.0	458.68	
69	34°	172.0	348.45	
70	27° 50'	52.03	215.16	

**NELSON ENGINEERING**  
JACKSON, WYO  
DWG NO. 306

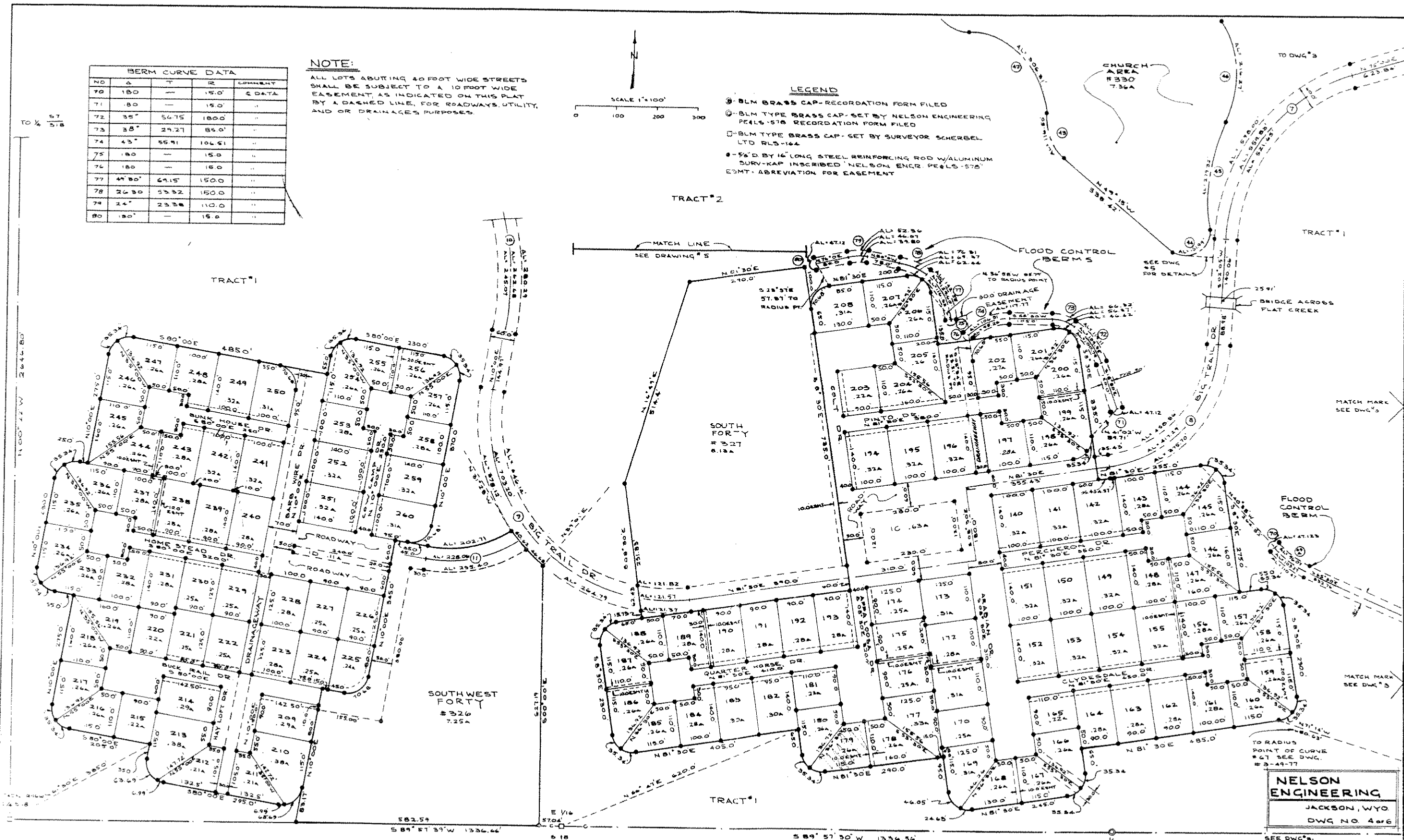
TO  
S 18 5.17  
2646.67

NO	Δ	T	R	COMMENT
70	180°	—	150'	2 DATA
71	80°	—	150'	"
72	35°	56.75	1800'	"
73	38°	27.27	850'	"
74	43°	56.91	104.61	"
75	180°	—	150'	"
76	180°	—	150'	"
77	44° 30'	67.15	1500'	"
78	26° 30'	53.32	1500'	"
79	24°	23.38	1100'	"
80	180°	—	150'	"

**NOTE:**  
ALL LOTS ABUTTING 40 FOOT WIDE STREETS SHALL BE SUBJECT TO A 10 FOOT WIDE EASEMENT AS INDICATED ON THIS PLAT BY A DASHED LINE, FOR ROADWAYS, UTILITY, AND OR DRAINAGES PURPOSES.

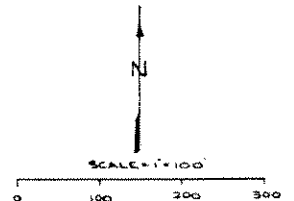
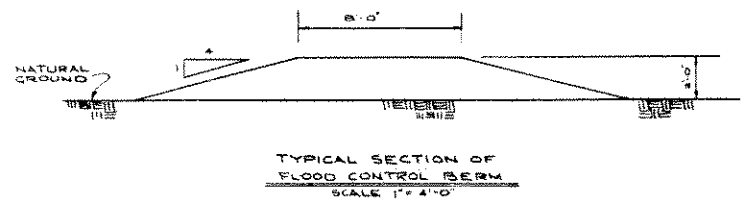


- LEGEND**
- ① - BLM BRASS CAP - RECORDATION FORM FILED
  - ② - BLM TYPE BRASS CAP - SET BY NELSON ENGINEERING PEELS-578 RECORDATION FORM FILED
  - ③ - BLM TYPE BRASS CAP - SET BY SURVEYOR SCHERBEL LTD RLS-144
  - ④ - 5/8" BY 14" LONG STEEL REINFORCING ROD W/ALUMINUM SURV-KAP INSCRIBED 'NELSON ENGR. PEELS-578' E3MT - ABBREVIATION FOR EASEMENT

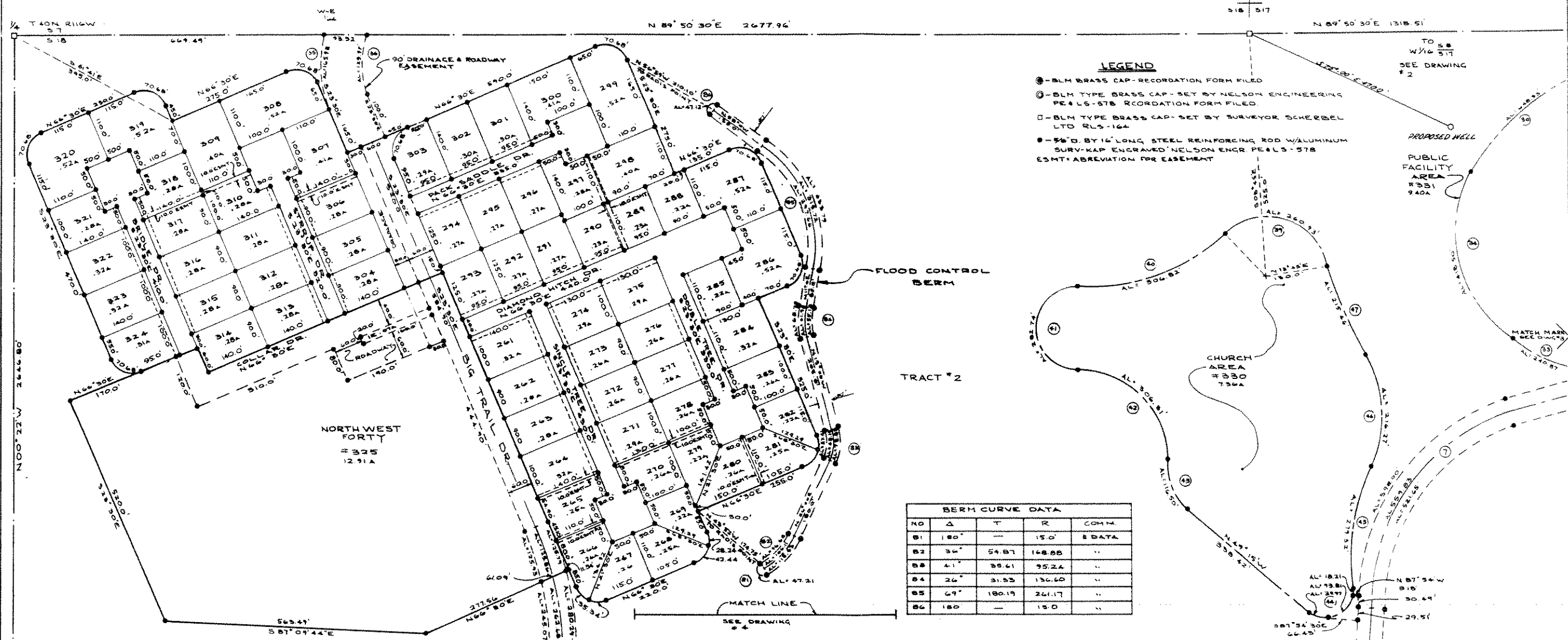


**NELSON ENGINEERING**  
JACKSON, WYO  
DWG NO. 4066

SEE DWG'S: TO C4 517  
518 | 517 **RAFTER RANCH SUBDIVISION**  
PORTION OF SECTION 8, 17 & 18  
T40N R14W TETON COUNTY, WYOMING  
DEVELOPER: CHARLES E. LEWTON



MATCH MARK  
SEE DWG #2



- LEGEND**
- ① - BLM BRASS CAP - RECORDATION FORM FILED
  - ② - BLM TYPE BRASS CAP - SET BY NELSON ENGINEERING PE#LS-578 RECORDATION FORM FILED
  - ③ - BLM TYPE BRASS CAP - SET BY SURVEYOR SCHERBEL LTD RLS-164
  - ④ - 5/8" Ø BY 12' LONG STEEL REINFORCING ROD W/ALUMINUM SURV-KAP ENGRAVED NELSON ENGR PE#LS-578 ESMT ABBREVIATION FOR EASEMENT

**BERM CURVE DATA**

NO	Δ	T	R	COMM.
01	180°	—	150'	8 DATA
02	34°	54.87	168.88	"
03	41°	35.61	95.24	"
04	26°	31.53	136.60	"
05	69°	180.19	261.17	"
06	180°	—	150'	"

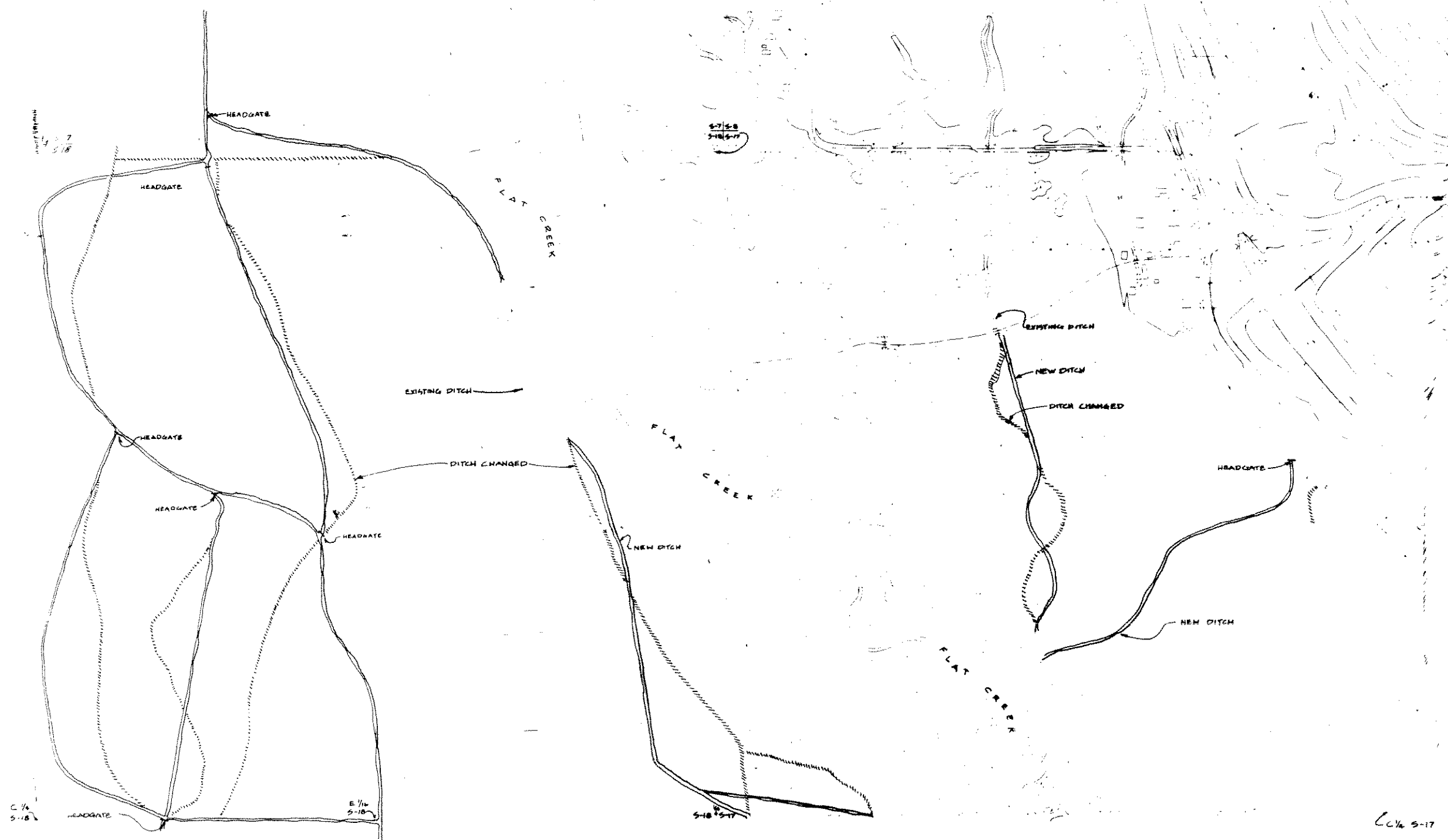
**NOTE:**  
ALL LOTS ABUTTING 40 FOOT WIDE STREETS SHALL BE SUBJECT TO 2.10 FEET WIDE EASEMENTS, AS INDICATED ON THIS PLAT BY DASHED LINE, FOR ROADWAY, UTILITY, & OR DRAINAGE PURPOSES

**NELSON ENGINEERING**  
JACKSON, WYO  
DWG NO 5016

RAFTER ↑ RANCH SUBDIVISION  
PORTION OF SECTIONS 8, 17 & 18  
T40N R16W TETON COUNTY, WYOMING  
DEVELOPER: CHARLES E. LEWTON

MATCH MARK  
SEE DWG #3

TO  
C/4 518



WATER SOURCE & DRAINAGE  
 PLAN  
 ZIETER'S RANCH SUBDIVISION  
 PORTIONS OF SECTIONS 6, 17 & 18  
 TARDON RIVER, TETON COUNTY  
 WYOMING