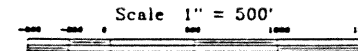


LOCATION MAP



=CERTIFICATE OF SURVEYOR=

State of Wyoming)
 SS
 County of Teton)

I, John J. Warren, of Jackson, Wyoming, hereby certify that this map was made from record information available in the Office of the Clerk of Teton County, Wyoming and is intended to illustrate the location of building envelopes created within Gros Ventre North Subdivision, of record in said Office as Plat No. 410, and within Gros Ventre North Subdivision Second Filing, of record in said Office as Plat No. 623; that said envelopes are intended to meet or exceed the minimum setback requirements in effect under the regulations of the Teton County Comprehensive Plan; that the lots where no building envelope is indicated are subject to said minimum setback requirements; that in case of discrepancies between this map and the above mentioned plats, said plats control.

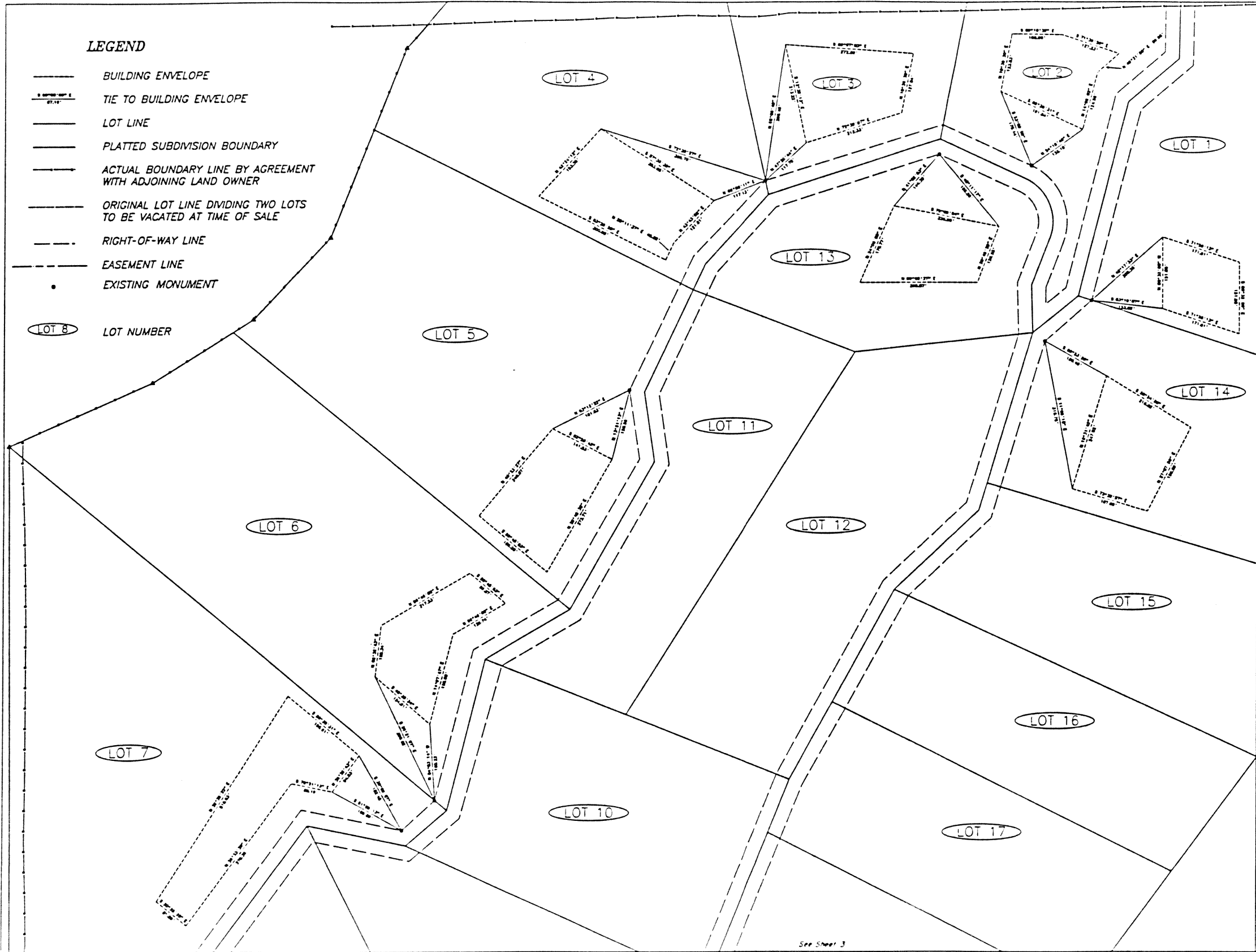


John J. Warren
 Wyoming Professional Land Surveyor No. 4530

11.15.11
 2/2/12
 10/10/12
 10/10/12

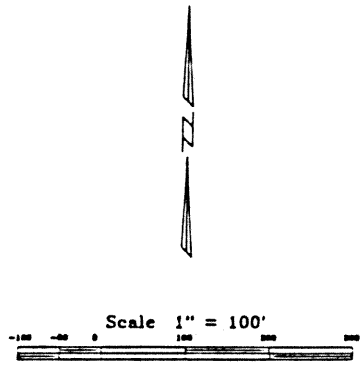
D-63

MAP OF BUILDING ENVELOPES
 GROS VENTRE NORTH SUBDIVISION
 PART OF SECTIONS 17, 18, 19, & 20
 T41N R116W 6th P.M.
 TETON COUNTY, WYOMING



LEGEND

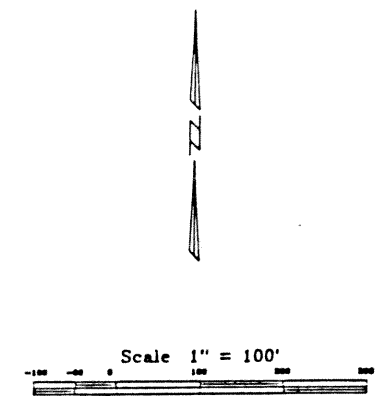
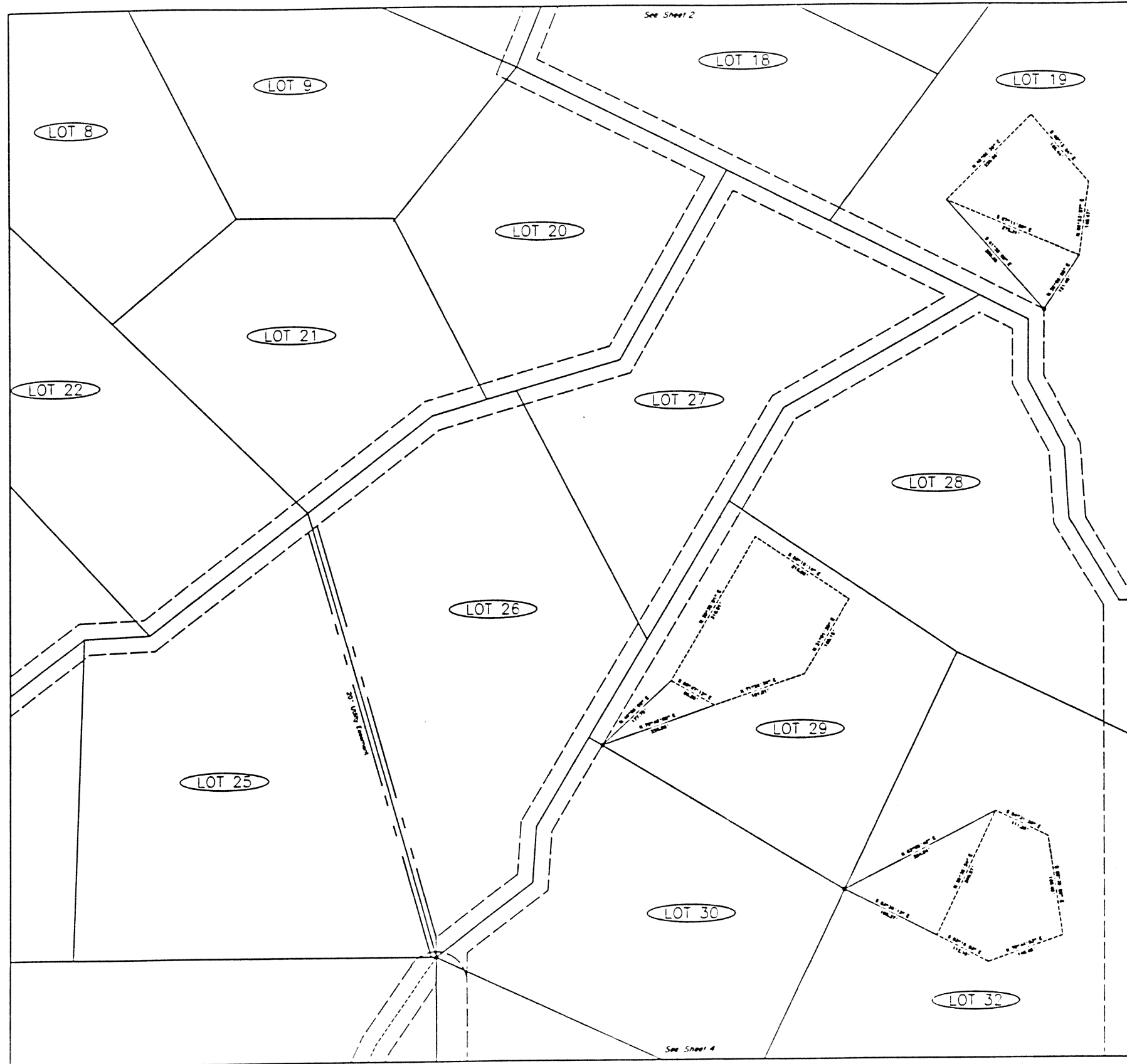
- BUILDING ENVELOPE
- TIE TO BUILDING ENVELOPE
- LOT LINE
- PLATTED SUBDIVISION BOUNDARY
- ACTUAL BOUNDARY LINE BY AGREEMENT WITH ADJOINING LAND OWNER
- ORIGINAL LOT LINE DIVIDING TWO LOTS TO BE VACATED AT TIME OF SALE
- RIGHT-OF-WAY LINE
- EASEMENT LINE
- EXISTING MONUMENT
- LOT NUMBER



This map is an abstract of Plat No. 410, Gros Ventre North Subdivision and Plat No. 623, Gros Ventre North Subdivision, Second Filing, approved by the Teton County Board of County Commissioners.

In case of discrepancies between this map and the above mentioned plats, said plats control.

MAP OF
 BUILDING ENVELOPES
 GROS VENTRE NORTH
 SUBDIVISION



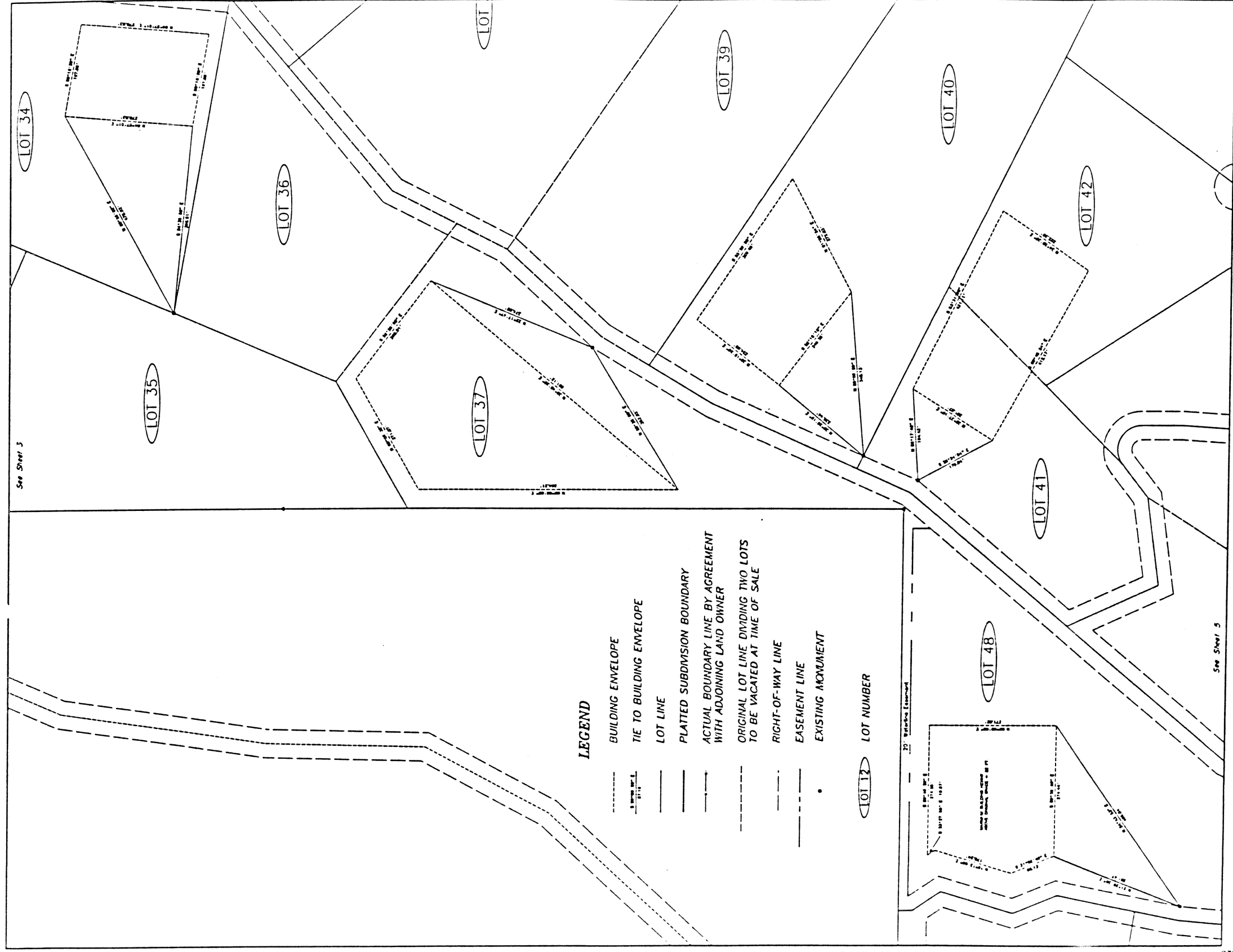
LEGEND

- BUILDING ENVELOPE
- TIE TO BUILDING ENVELOPE
- LOT LINE
- PLATTED SUBDIVISION BOUNDARY
- ACTUAL BOUNDARY LINE BY AGREEMENT WITH ADJOINING LAND OWNER
- ORIGINAL LOT LINE DIVIDING TWO LOTS TO BE VACATED AT TIME OF SALE
- - - - RIGHT-OF-WAY LINE
- - - - EASEMENT LINE
- EXISTING MONUMENT
- LOT NUMBER

This map is an abstract of Plat No. 410, Gros Ventre North Subdivision and Plat No. 623, Gros Ventre North Subdivision, Second Filing, approved by the Teton County Board of County Commissioners.

In case of discrepancies between this map and the above mentioned plats, said plats control.

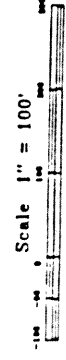
MAP OF BUILDING ENVELOPES
GROS VENTRE NORTH SUBDIVISION



See Sheet 3

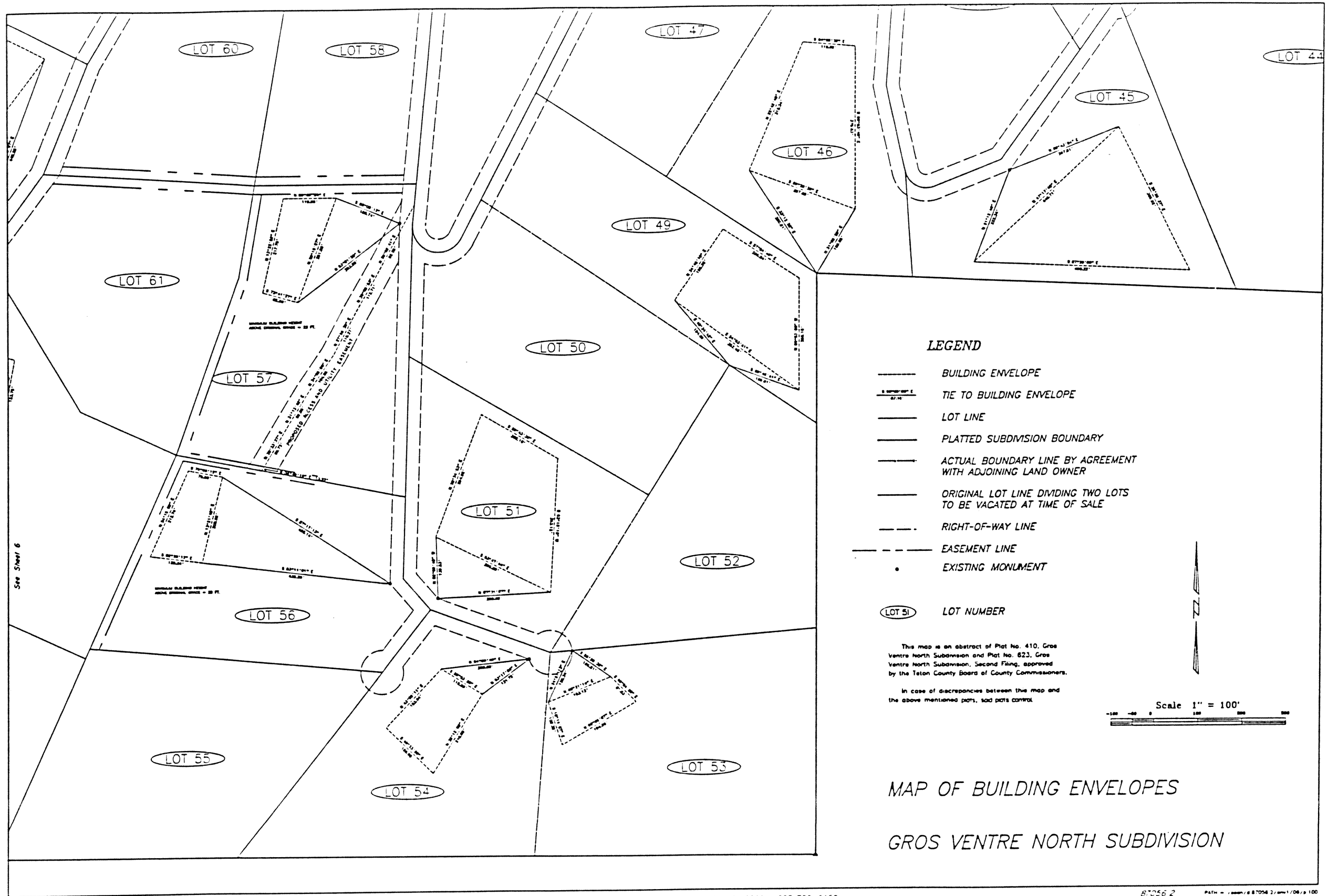
See Sheet 5

MAP OF BUILDING ENVELOPES
GROS VENTRE NORTH SUBDIVISION



This map is an abstract of Plat No. 410, Gros Ventre North Subdivision and Plat No. 823, Gros Ventre North Subdivision, Second Filing, recorded by the Teton County Board of County Commissioners in case of discrepancy between this map and the above mentioned plats, said plats control.

PLAT - /map/681056.2/area/04/100



See Sheet 6

