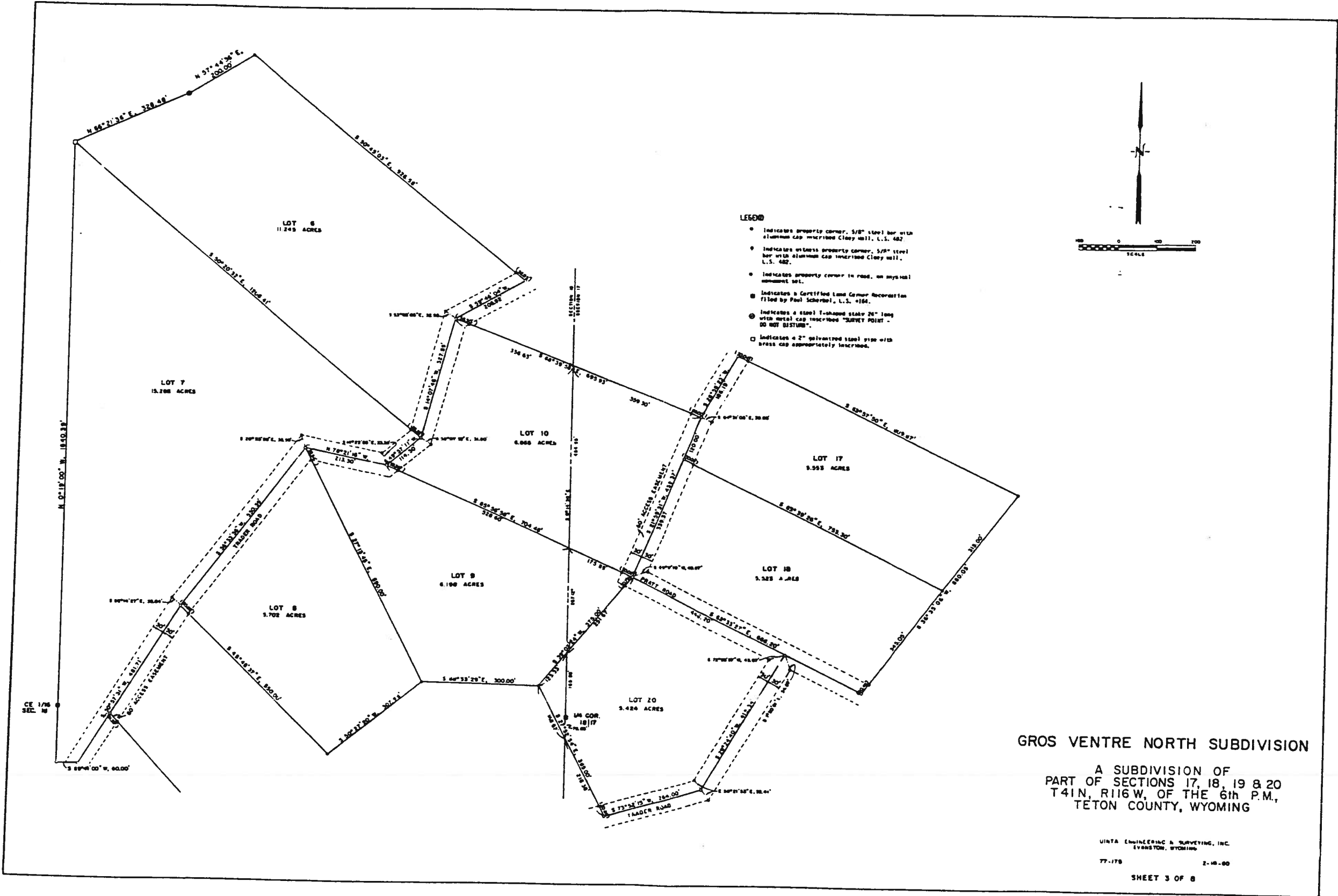


- LEGEND**
- Indicates property corner, 1/2" steel bar with aluminum cap inscribed "Lot #", L.S. #.
  - Indicates witness property corner, 1/2" steel bar with aluminum cap inscribed "Lot #", L.S. #.
  - Indicates property corner to road, no physical monument set.
  - Indicates a Certified Land Corner Accretion filed by Paul Scherbel, L.S. #164.
  - ⊕ Indicates a steel T-shaped stake 24" long with metal cap inscribed "SURVEY POINT - DO NOT DISTURB".
  - Indicates a 2" galvanized steel pipe with brass cap appropriately inscribed.

**GROS VENTRE NORTH SUBDIVISION**  
 A SUBDIVISION OF  
 PART OF SECTIONS 17, 18, 19 & 20  
 T41N, R116W, OF THE 6th P.M.,  
 TETON COUNTY, WYOMING

UNTA ENGINEERING & SURVEYING, INC.  
 EVANSTON, WYOMING  
 77-75 2-18-80  
 SHEET 2 OF 8



- LEGEND**
- Indicates property corner, 5/8" steel bar with aluminum cap inscribed Clay Hill, L.S. 482
  - Indicates witness property corner, 5/8" steel bar with aluminum cap inscribed Clay Hill, L.S. 482.
  - Indicates property corner in road, on mysonal monument set.
  - Indicates a Certified Land Corner Recreation filed by Paul Scherbel, L.S. #164.
  - ⊕ Indicates a steel T-shaped stake 26" long with metal cap inscribed "SURVEY POINT - DO NOT DISTURB".
  - Indicates a 2" galvanized steel pipe with brass cap appropriately inscribed.

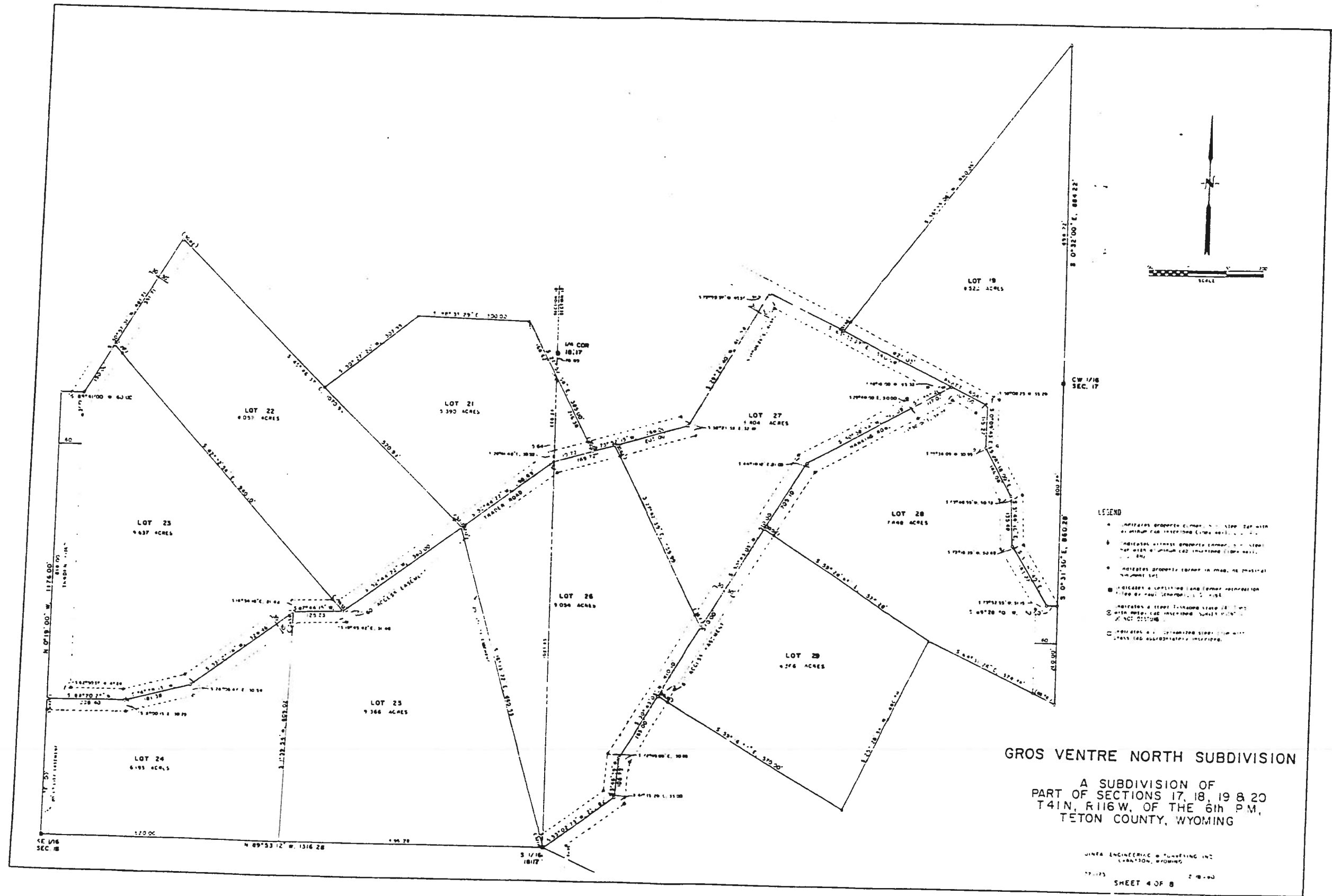
**GROS VENTRE NORTH SUBDIVISION**

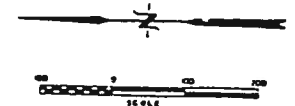
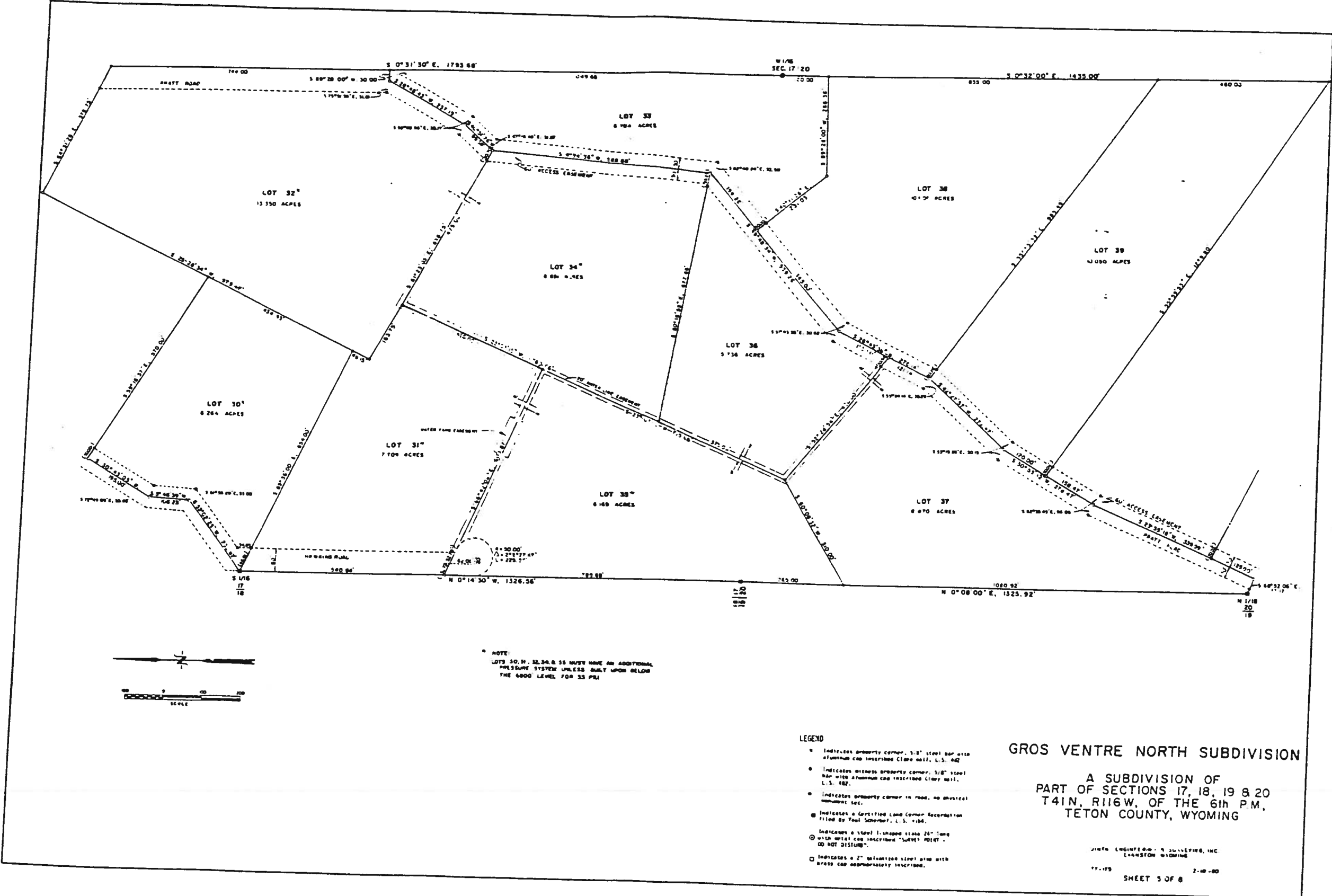
A SUBDIVISION OF  
 PART OF SECTIONS 17, 18, 19 & 20  
 T41N, R116W, OF THE 6th P.M.,  
 TETON COUNTY, WYOMING

UNITA ENGINEERING & SURVEYING, INC.  
 EVANSTON, WYOMING

77-178 2-18-00

SHEET 3 OF 8





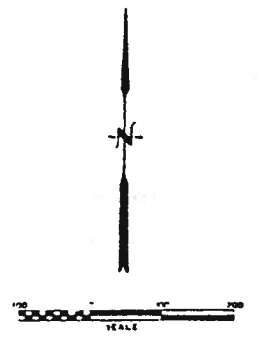
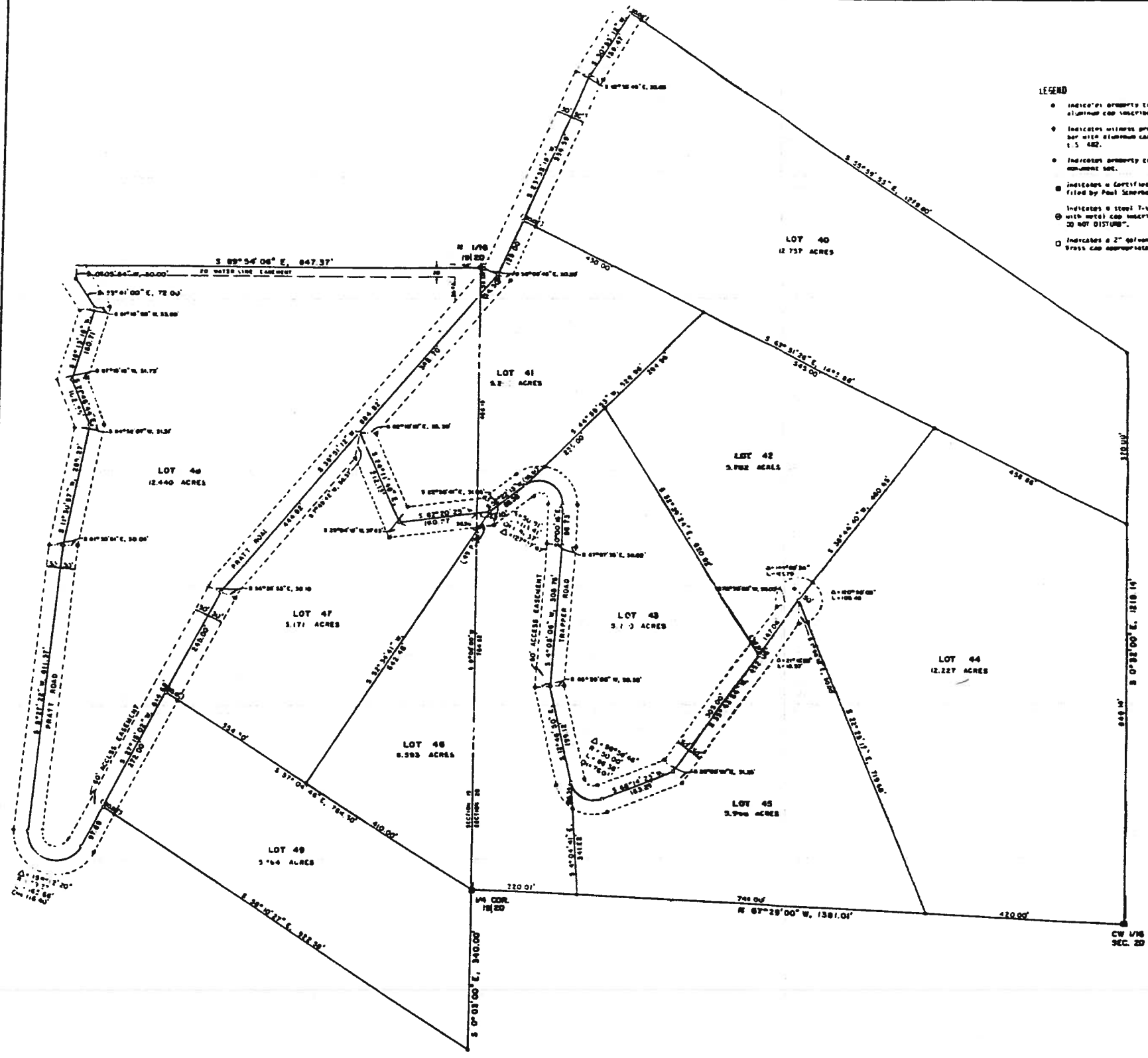
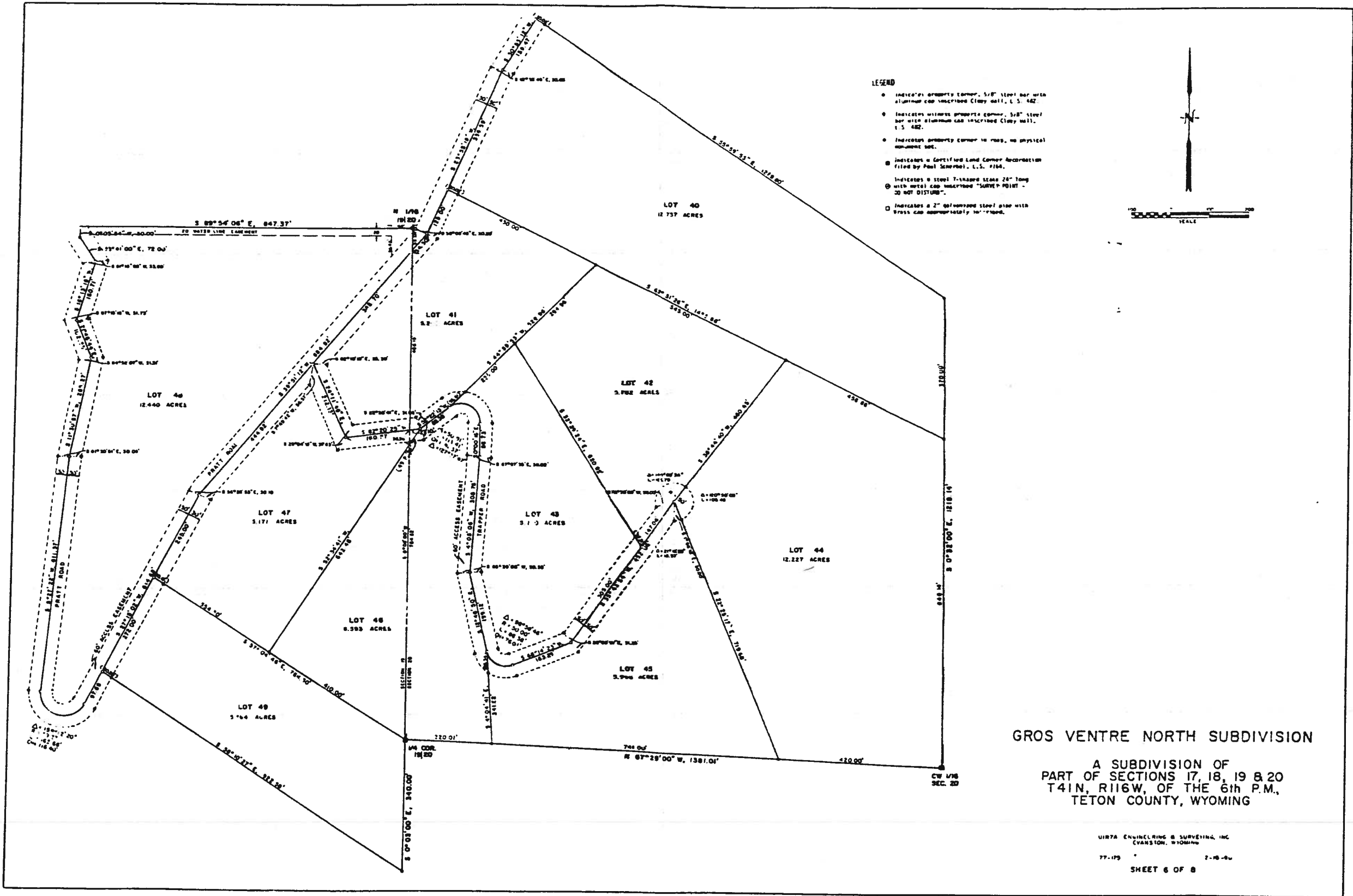
NOTE:  
 LOTS 30, 31, 32, 34 & 35 MUST HAVE AN ADDITIONAL  
 PRESSURE SYSTEM UNLESS BUILT UPON BELOW  
 THE 6000 LEVEL FOR 33 PSI

- LEGEND
- Indicates property corner, 5/8" steel bar with aluminum cap inscribed clay nail, L.S. 482
  - Indicates witness property corner, 5/8" steel bar with aluminum cap inscribed clay nail, L.S. 482
  - Indicates property corner in road, no physical monument set.
  - ◻ Indicates a Certified Land Corner Recorrection filed by Paul Schenker, L.S. 484.
  - ◊ Indicates a steel I-shaped stake 2 1/2" long with metal cap inscribed "SURVEY POINT - DO NOT DISTURB".
  - ◻ Indicates a 2" galvanized steel pipe with brass cap appropriately inscribed.

GROS VENTRE NORTH SUBDIVISION

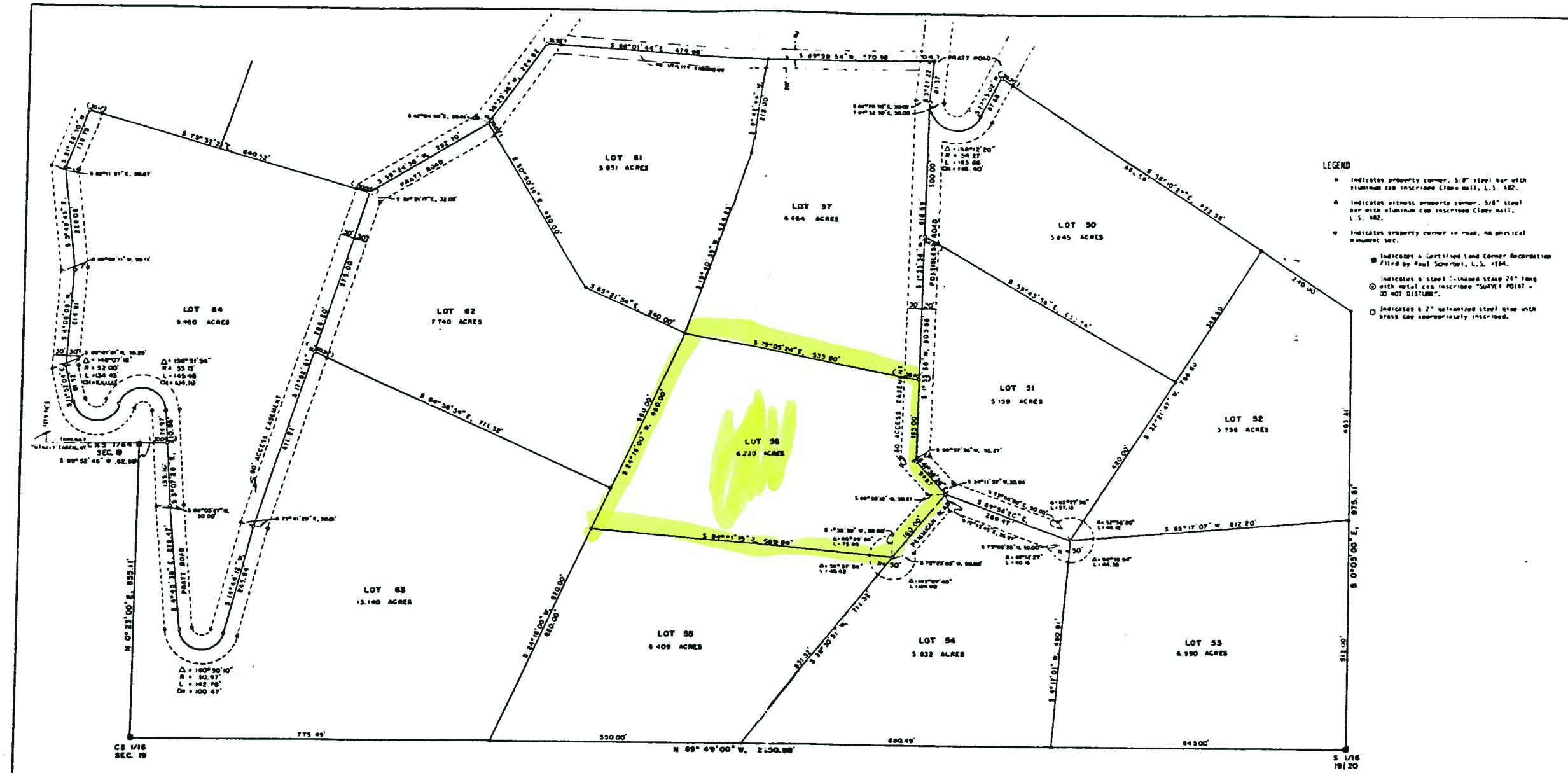
A SUBDIVISION OF  
 PART OF SECTIONS 17, 18, 19 & 20  
 T41N, R116W, OF THE 6th P.M.,  
 TETON COUNTY, WYOMING

JIMM ENGINEERING & SURVEYING, INC.  
 LARAMIE WYOMING  
 77-179 2-10-00  
 SHEET 5 OF 8

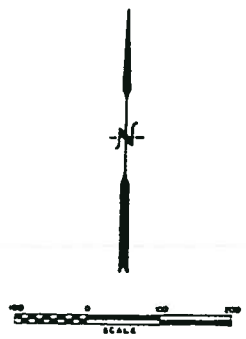


**GROS VENTRE NORTH SUBDIVISION**  
 A SUBDIVISION OF  
 PART OF SECTIONS 17, 18, 19 & 20  
 T41N, R116W, OF THE 6th P.M.,  
 TETON COUNTY, WYOMING

UNITA ENGINEERING & SURVEYING, INC.  
 EVANSTON, WYOMING  
 77-175 7-18-84  
 SHEET 6 OF 8



- LEGEND**
- Indicates property corner, 5/8" steel bar with aluminum cap inscribed Clear nail, L.S. 482.
  - Indicates almost property corner, 5/8" steel bar with aluminum cap inscribed Clear nail, L.S. 482.
  - Indicates property corner to road, no physical monument set.
  - Indicates a Certified Land Corner Reclamation filed by Paul Schermer, L.S. 1184.
  - Indicates a steel 1/2" x 3/4" x 24" long with metal cap inscribed "SURVEY POINT - DO NOT DISTURB".
  - Indicates a 7" galvanized steel step with brass cap appropriately inscribed.



**GROS VENTRE NORTH SUBDIVISION**

A SUBDIVISION OF  
 PART OF SECTIONS 17, 18, 19 & 20  
 T41N, R116W, OF THE 6th P.M.,  
 TETON COUNTY, WYOMING

UINTE ENGINEERING & SURVEYING, INC.  
 EVANSTON, WYOMING  
 77-175 7-18-84  
**SHEET 7 OF 8**

